

YOUR SKYRIZI INFUSION PREP GUIDE

You play an important role in your prescribed treatment. The following steps will help you prepare for your SKYRIZI infusions.



Skyrizi[®] COMPLETE



STEPS TO A SMOOTH START

- Confirm with your doctor where you will be having your scheduled infusions.**
Record the name, location, and phone number below.

INFUSION LOCATION

(Name/address): _____

PHONE NUMBER FOR INFUSION LOCATION: () - _____

- Talk to your doctor about lab tests before, during, and up to 12 weeks of treatment with SKYRIZI.**
- Schedule your infusions in advance. Write down the date and time of each of your 3 infusions.** Have your Skyrizi Complete Savings Card* handy.

INFUSION 1
(Date/time): _____ / _____ / _____ : _____ AM
 PM

INFUSION 2
(Date/time): _____ / _____ / _____ : _____ AM
 PM

INFUSION 3
(Date/time): _____ / _____ / _____ : _____ AM
 PM

*For eligible, commercially insured patients only. See full Terms and Conditions on page 3.

Please see **Use and Important Safety Information** on page 4.
Please see full Prescribing Information, including Medication Guide,
at www.rxabbvie.com/pdf/skyrizi_pi.pdf and discuss with your doctor.
To learn about AbbVie's privacy practices and your privacy choices,
visit <https://abbvie.com/privacy>

Skyrizi[®]
risankizumab-rzaa

YOUR SKYRIZI INFUSION PREP GUIDE

You play an important role in your prescribed treatment. The following steps will help you prepare for your SKYRIZI infusions.

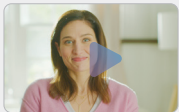
Skyrizi[®] COMPLETE



PREPARING FOR YOUR SCHEDULED INFUSIONS

These recommended steps can help you prepare.

- STEP 1: Make a list of current medications and supplements.** A health care provider may ask about them when you arrive at the treatment location.
- STEP 2: Drink plenty of water** beforehand.
- STEP 3: Get a good night's sleep** before you go to your appointment.



Prefer to watch a video?

Visit [InfusionPrepSKYRIZI.com](https://www.infusionprep.skyrizi.com) to check out the SKYRIZI Infusion Video for more information and tips on the infusion process.



WHAT TO BRING TO YOUR INFUSION

Infusions can take up to 2 hours, so you may want to bring something to pass the time.

Ask your infusion location if there's anything you could bring, like a blanket or a pillow. You'll want to wear something that will make it easier for your health care provider to access your arms.



Please see **Use and Important Safety Information** on page 4. Please see full Prescribing Information, including Medication Guide, at www.rxabbvie.com/pdf/skyrizi_pi.pdf and discuss with your doctor. To learn about AbbVie's privacy practices and your privacy choices, visit <https://abbvie.ie/corpprivacy>

Skyrizi[®]
risankizumab-rzaa

YOUR SKYRIZI INFUSION PREP GUIDE

You play an important role in your prescribed treatment. The following steps will help you prepare for your SKYRIZI infusions.

Skyrizi[®] COMPLETE



DON'T FORGET ABOUT THE SKYRIZI COMPLETE APP

This easy-to-use resource can help you access a full range of support at every step of your treatment. Use it to set treatment reminders, log your treatments, track your symptoms, and access helpful infusion and injection tips and training refreshers.



Download the App today

To download the App, scan the QR code to the left with your smartphone camera, or search for "Skyrizi Complete" in the App Store or Google Play.



Questions about your infusion?

Call **1.866.SKYRIZI (1.866.759.7494)** today to chat with your Skyrizi Complete Nurse Ambassador* and ask about availability for virtual visits.

*Nurse Ambassadors are provided by AbbVie and do not work under the direction of your health care professional (HCP) or give medical advice. They are trained to direct patients to their HCP for treatment-related advice, including further referrals.

Skyrizi Complete Savings Card Terms & Conditions

Eligibility: Available to patients with commercial insurance coverage for SKYRIZI[®] (risankizumab-rzaa) who meet eligibility criteria. This co-pay assistance program is not available to patients receiving prescription reimbursement under any federal, state, or government-funded insurance programs (for example, Medicare [including Part D], Medicare Advantage, Medigap, Medicaid, TRICARE, Department of Defense, or Veterans Affairs programs) or where prohibited by law. Offer subject to change or termination without notice. Restrictions, including monthly maximums, may apply. This is not health insurance. For full Terms and Conditions, visit [SKYRIZI[®] SavingsCard.com](https://www.skyrizi.com/savings-card) or call 1.866.SKYRIZI for additional information. To learn about AbbVie's privacy practices and your privacy choices, visit <https://abbvie.com/privacy>.

Please see [Use and Important Safety Information](#) on page 4.
Please see full Prescribing Information, including Medication Guide, at www.rxabbvie.com/pdf/skyrizi_pi.pdf and discuss with your doctor.
To learn about AbbVie's privacy practices and your privacy choices, visit <https://abbvie.com/privacy>


Skyrizi[®]
risankizumab-rzaa

USE AND IMPORTANT SAFETY INFORMATION ABOUT SKYRIZI® (risankizumab-rzaa)¹

SKYRIZI USE¹

SKYRIZI is a prescription medicine used to treat moderate to severe Crohn's disease in adults.

IMPORTANT SAFETY INFORMATION¹

What is the most important information I should know about SKYRIZI® (risankizumab-rzaa)?

SKYRIZI is a prescription medicine that may cause serious side effects, including:

Serious allergic reactions:

- Stop using SKYRIZI and get emergency medical help right away if you get any of the following symptoms of a serious allergic reaction:
 - fainting, dizziness, feeling lightheaded (low blood pressure)
 - swelling of your face, eyelids, lips, mouth, tongue, or throat
 - trouble breathing or throat tightness
 - chest tightness
 - skin rash, hives
 - itching

Infections:

SKYRIZI may lower the ability of your immune system to fight infections and may increase your risk of infections. Your healthcare provider should check you for infections and tuberculosis (TB) before starting treatment with SKYRIZI and may treat you for TB before you begin treatment with SKYRIZI if you have a history of TB or have active TB. Your healthcare provider should watch you closely for signs and symptoms of TB during and after treatment with SKYRIZI.

- Tell your healthcare provider right away if you have an infection or have symptoms of an infection, including:
 - fever, sweats, or chills
 - cough
 - shortness of breath
 - blood in your mucus (phlegm)
 - muscle aches
 - warm, red, or painful skin or sores on your body different from your psoriasis
 - weight loss
 - diarrhea or stomach pain
 - burning when you urinate or urinating more often than normal

Do not use SKYRIZI if you are allergic to risankizumab-rzaa or any of the ingredients in SKYRIZI. See the Medication Guide or Consumer Brief Summary for a complete list of ingredients.

Before using SKYRIZI, tell your healthcare provider about all of your medical conditions, including if you:

- have any of the conditions or symptoms listed in the section “What is the most important information I should know about SKYRIZI?”
- have an infection that does not go away or that keeps coming back.
- have TB or have been in close contact with someone with TB.

Please see full Prescribing Information, including Medication Guide, at www.rxabbvie.com/pdf/skyrizi_pi.pdf and discuss with your doctor. To learn about AbbVie's privacy practices and your privacy choices, visit <https://abbvie.com/privacy>

abbvie

© 2023 AbbVie. All rights reserved.
SKYRIZI® and its design are registered
trademarks of AbbVie Biotechnology Ltd.

US-SKZG-230515

- have recently received or are scheduled to receive an immunization (vaccine). Medicines that interact with the immune system may increase your risk of getting an infection after receiving live vaccines. You should avoid receiving live vaccines right before, during, or right after treatment with SKYRIZI. Tell your healthcare provider that you are taking SKYRIZI before receiving a vaccine.
- are pregnant or plan to become pregnant. It is not known if SKYRIZI can harm your unborn baby.
- are breastfeeding or plan to breastfeed. It is not known if SKYRIZI passes into your breast milk.
- become pregnant while taking SKYRIZI. You are encouraged to enroll in the Pregnancy Registry, which is used to collect information about the health of you and your baby. Talk to your healthcare provider or call 1-877-302-2161 to enroll in this registry.

Tell your healthcare provider about all the medicines you take, including prescription and over-the-counter medicines, vitamins, and herbal supplements.

What are the possible side effects of SKYRIZI?

SKYRIZI may cause serious side effects. See “What is the most important information I should know about SKYRIZI?”

Liver problems in Crohn's disease: A person with Crohn's disease who received SKYRIZI through a vein in the arm developed changes in liver blood tests with a rash that led to hospitalization. Your healthcare provider will do blood tests to check your liver before, during, and up to 12 weeks of treatment and may stop treatment with SKYRIZI if you develop liver problems. Tell your healthcare provider right away if you notice any of the following symptoms: unexplained rash, nausea, vomiting, stomach (abdominal) pain, tiredness (fatigue), loss of appetite, yellowing of the skin and eyes (jaundice), and dark urine.

The most common side effects of SKYRIZI in people treated for Crohn's disease include: upper respiratory infections, headache, joint pain, stomach (abdominal) pain, injection site reactions, low red blood cells (anemia), fever, back pain, and urinary tract infection.

These are not all the possible side effects of SKYRIZI. Call your doctor for medical advice about side effects.

Use SKYRIZI exactly as your healthcare provider tells you to use it.

SKYRIZI is available in a 600 mg/10 mL vial for intravenous infusion and a 180 mg/1.2 mL or 360 mg/2.4 mL single-dose prefilled cartridge with on-body injector.

You are encouraged to report negative side effects of prescription drugs to the FDA. Visit www.fda.gov/medwatch or call 1-800-FDA-1088.

If you are having difficulty paying for your medicine, AbbVie may be able to help. Visit AbbVie.com/myAbbVieAssist to learn more.

Reference: 1. SKYRIZI [package insert]. North Chicago, IL: AbbVie Inc.


Skyrizi[®]
risankizumab-rzaa