

STEP-BY-STEP GUIDE

TO USING YOUR SKYRIZI ON-BODY INJECTOR

Skyrizi[®] COMPLETE



Please see **Use and Important Safety Information** on pages 36-37. Please see full **Prescribing Information**, including **Medication Guide**, at https://www.rxabbvie.com/pdf/skyrizi_pi.pdf and discuss with your doctor.


Skyrizi[®]
risankizumab-rzaa

EVERYTHING YOU’LL NEED TO USE YOUR OBI CORRECTLY

When you receive your medication, the **Instructions for Use** that comes with your SKYRIZI On-Body Injector (OBI) will spell out everything you need to do, step-by-step.

<u>Get Ready</u>	<u>6</u>
<u>Set Up OBI</u>	<u>14</u>
<u>Prepare to Inject</u>	<u>19</u>
<u>Inject Medicine</u>	<u>25</u>
<u>Confirm and Dispose</u>	<u>29</u>
<u>Remember the 5 P’s</u>	<u>31</u>
<u>Let the Lights and Sounds Guide You</u>	<u>33</u>
<u>More Resources to Help With Injecting</u>	<u>34</u>



STEP-BY-STEP SUPPORT

Reach out to your Skyrizi Complete Nurse Ambassador* when you need it, either over the phone, in video chat, or in person. Call **1.866.SKYRIZI** (1.866.759.7494).

*Nurse Ambassadors are provided by AbbVie and do not work under the direction of your health care professional (HCP) or give medical advice. They are trained to direct patients to their HCP for treatment-related advice, including further referrals.

Skyrizi[®] COMPLETE

Please see **Use and Important Safety Information** on pages 36-37. Please see full **Prescribing Information**, including **Medication Guide**, at https://www.rxabbvie.com/pdf/skyrizi_pi.pdf and discuss with your doctor.

Skyrizi[®]
risankizumab-rzaa

USE¹

SKYRIZI is a prescription medicine used to treat moderate to severe Crohn's disease in adults.

SAFETY CONSIDERATIONS¹

SKYRIZI may cause serious side effects, including:

- **Serious allergic reactions:** Stop using SKYRIZI and get emergency medical help right away if you get any symptoms of a serious allergic reaction.
- **Infections:** SKYRIZI may increase your risk of infections. Before starting treatment, your doctor should check you for infections and tuberculosis. Tell your doctor right away if you have an infection or symptoms of one.

Do not use SKYRIZI if you are allergic to risankizumab-rzaa or any of the ingredients in SKYRIZI.

- Also, tell your doctor if you plan to or recently received a vaccine.
- **Liver problems in Crohn's disease:** A person with Crohn's disease who received SKYRIZI by intravenous infusion developed changes in liver blood tests with a rash that led to hospitalization. Your doctor will do liver blood tests before and during treatment and may stop treatment with SKYRIZI if you develop liver problems.

Please see additional **Important Safety Information** on pages 36-37. Please see full **Prescribing Information**, including **Medication Guide**, at https://www.rxabbvie.com/pdf/skyrizi_pi.pdf and discuss with your doctor.


Skyrizi[®]
risankizumab-rzaa

GETTING READY TO INJECT AT HOME

This guide will give you the training to start injecting SKYRIZI at home and help you understand how to use your OBI.

Don't try to inject SKYRIZI until your doctor has decided you can, and you've been shown the right way to inject.

You can use this guide as a supplemental resource as you make injecting SKYRIZI routine. Be sure to use the **Instructions for Use** that comes with your OBI as your main resource for injection training. It will guide you through each step, one at a time. It shows you exactly what to do, and how to do it.



SUPPORT THAT'S ALWAYS HERE FOR YOU

Your Skyrizi Complete Nurse Ambassador can offer you injection support, either over the phone, in video chat, or in person. Call **1.866.SKYRIZI** (1.866.759.7494).

Skyrizi[®] COMPLETE

Please see **Use and Important Safety Information** on pages 36-37. Please see full **Prescribing Information**, including **Medication Guide**, at https://www.rxabbvie.com/pdf/skyrizi_pi.pdf and discuss with your doctor.

Skyrizi[®]
risankizumab-rzaa

YOUR OBI

FRONT

GRAY DOOR

Do not close gray door without prefilled cartridge inside

MEDICINE WINDOW

PULL TABS

ADHESIVE MATERIAL

STATUS LIGHT

GRAY START BUTTON

Do not touch until ready to inject



BACK

ADHESIVE BACKING

⚠ NEEDLE COVER

⚠ NEEDLE INSIDE (under needle cover)

⚠ Do not touch the needle cover or needle

CLEAR PLASTIC STRIP

SIDE

DOOR LATCH

Opening side has ridges

Gray door should be slightly open



LARGE SECTION GREEN PULL TAB

SMALL SECTION GREEN PULL TAB



Skyrizi® COMPLETE

Please see **Use and Important Safety Information** on pages 36-37. Please see full **Prescribing Information**, including **Medication Guide**, at https://www.rxabbvie.com/pdf/skyrizi_pi.pdf and discuss with your doctor.

Skyrizi®
risankizumab-rzaa

STEP 1: GET READY

Before using SKYRIZI, you should receive training on how to inject SKYRIZI from your doctor or a healthcare professional in their office.

1A



Check expiration date

- Remove the carton from the refrigerator
- Check expiration date on the carton
- **Do not** use SKYRIZI if the expiration date has passed

Directions in this section can be found in the **Instructions for Use** that comes with your OBI.



1-TO-1 SUPPORT WITH INJECTING

Reach out to your Nurse Ambassador over the phone, in video chat, or in person. Just call **1.866.SKYRIZI** (1.866.759.7494).

Skyrizi® COMPLETE

Please see **Use and Important Safety Information** on pages 36-37. Please see full **Prescribing Information**, including **Medication Guide**, at https://www.rxabbvie.com/pdf/skyrizi_pi.pdf and discuss with your doctor.

Skyrizi®
risankizumab-rzaa

STEP 1: GET READY

1B

45

Remember to wait at least 45 minutes to allow SKYRIZI to reach room temperature



Wait at least 45 minutes

- Leave unopened carton at room temperature to warm
- Keep out of direct sunlight
- Wait at least 45 minutes up to a maximum of 90 minutes to allow SKYRIZI to warm
- **Do not** warm SKYRIZI in any other way (for example, **do not** warm it in a microwave or in hot water)

SKYRIZI[®] COMPLETE

Please see [Use and Important Safety Information](#) on pages 36-37. Please see full [Prescribing Information](#), including [Medication Guide](#), at https://www.rxabbvie.com/pdf/skyrizi_pi.pdf and discuss with your doctor.

SKYRIZI[®]
risankizumab-rzaa

STEP 1: GET READY

1C



Open the carton and remove the plastic tray

- Lift up the flap on the side of the carton
- Take out the plastic tray



1-TO-1 SUPPORT WITH INJECTING

Reach out to your Nurse Ambassador over the phone, in video chat, or in person. Just call **1.866.SKYRIZI** (1.866.759.7494).

Skyrizi[®] COMPLETE

Please see **Use and Important Safety Information** on pages 36-37. Please see full **Prescribing Information**, including **Medication Guide**, at https://www.rxabbvie.com/pdf/skyrizi_pi.pdf and discuss with your doctor.

Skyrizi[®]
risankizumab-rzaa

STEP 1: GET READY

1D



Tray with OBI and cartridge



2 alcohol wipes
(not included)



Cotton ball or gauze pad
(not included)



Sharps disposal container
(not included)



Instructions for Use
(not included)

Gather all supplies and wash hands

Place the above items on a clean surface. Wash and dry your hands.

NOTE: Cotton balls, gauze pads, and alcohol wipes are available at your local pharmacy. Contact your Nurse Ambassador to request a sharps disposal container.

Skyrizi® COMPLETE

Please see [Use and Important Safety Information](#) on pages 36-37. Please see full [Prescribing Information](#), including [Medication Guide](#), at https://www.rxabbvie.com/pdf/skyrizi_pi.pdf and discuss with your doctor.

Skyrizi®
risankizumab-rzaa

STEP 1: GET READY

1E



Remove the white paper tray seal

- Locate the black arrow
- Peel away the white paper tray seal from the plastic tray
- **Do not** use the OBI and prefilled cartridge if the white paper tray seal is missing or damaged. Call the pharmacy where you obtained your OBI for return instructions



1-TO-1 SUPPORT WITH INJECTING

Reach out to your Nurse Ambassador over the phone, in video chat, or in person. Just call [1.866.SKYRIZI](tel:1866SKYRIZI) (1.866.759.7494).

Skyrizi® COMPLETE

Please see [Use and Important Safety Information](#) on pages 36-37. Please see full [Prescribing Information](#), including [Medication Guide](#), at https://www.rxabbvie.com/pdf/skyrizi_pi.pdf and discuss with your doctor.

Skyrizi®
risankizumab-rzaa

STEP 1: GET READY



Lift the plastic cover

- Locate the rounded opening on the top cover
- Insert your pointer finger in the opening and place your thumb on the opposite side
- Lift the cover to remove and set aside

Skyrizi[®] COMPLETE

Please see [Use and Important Safety Information](#) on pages 36-37. Please see full [Prescribing Information](#), including [Medication Guide](#), at https://www.rxabbvie.com/pdf/skyrizi_pi.pdf and discuss with your doctor.

Skyrizi[®]
risankizumab-rzaa

STEP 1: GET READY

1G



Inspect the OBI

- Hold the OBI with the gray door at the top
- Check that the OBI is intact and undamaged
- The gray door should be slightly open
- If the gray door does not open, press in firmly on the gray door ridges (left side of the door) and swing open the door
- **Do not** close the gray door before the prefilled cartridge is loaded
- **Do not** use OBI if you drop it, discover missing pieces, or it is damaged
- **Do not** let the OBI get wet with water or any other liquids



1-TO-1 SUPPORT WITH INJECTING

Reach out to your Nurse Ambassador over the phone, in video chat, or in person. Just call **1.866.SKYRIZI** (1.866.759.7494).

Skyrizi[®] COMPLETE

Please see **Use and Important Safety Information** on pages 36-37. Please see full **Prescribing Information**, including **Medication Guide**, at https://www.rxabbvie.com/pdf/skyrizi_pi.pdf and discuss with your doctor.

Skyrizi[®]
risankizumab-rzaa

STEP 1: GET READY



START BUTTON



NEEDLE COVER

⚠ Do not touch the gray start button until it is time to inject. It can be pressed 1 time only. If the gray start button is pressed before placing it on your body, the OBI can no longer be used. Call [1.866.SKYRIZI](tel:18667597494) (1.866.759.7494).

- **Do not** touch the needle cover or the needle
- Proceed to Set Up OBI

Skyrizi[®] COMPLETE


Please see [Use and Important Safety Information](#) on pages 36-37. Please see full [Prescribing Information](#), including [Medication Guide](#), at https://www.rxabbvie.com/pdf/skyrizi_pi.pdf and discuss with your doctor.

Skyrizi[®]
risankizumab-rzaa

STEP 2: SET UP OBI

2A

**Fully open the gray door**

 **Avoid touching the needle cover or the needle on the back of the OBI. The needle is behind the needle cover.**

- Swing the gray door all the way to the right to open it
- If the gray door does not open, press in firmly on the gray door ridges (left side of the door) and swing open the door
- **Do not** close the gray door before the prefilled cartridge is loaded
- Put the OBI aside

Directions in this section can be found in the **Instructions for Use** that comes with your OBI.

**1-TO-1 SUPPORT WITH INJECTING**

Reach out to your Nurse Ambassador over the phone, in video chat, or in person.
Just call **1.866.SKYRIZI** (1.866.759.7494).

Skyrizi[®] COMPLETE

Please see **Use and Important Safety Information** on pages 36-37.
Please see full **Prescribing Information**, including **Medication Guide**,
at https://www.rxabbvie.com/pdf/skyrizi_pi.pdf and discuss
with your doctor.


Skyrizi[®]
risankizumab-rzaa

STEP 2: SET UP OBI

2B



Inspect the prefilled cartridge

- Carefully remove the prefilled cartridge from the plastic tray
- **Do not** twist or remove cartridge top
- Check the prefilled cartridge to make sure:
 - The expiration date has not passed
 - The liquid should look clear to yellow and may contain tiny white or clear particles. It is normal to see one or more bubbles
 - The prefilled cartridge parts appear intact, and the clear plastic is not cracked or broken
- **Do not** use if the expiration date has passed
- **Do not** use if the liquid is cloudy, discolored, or contains flakes or large particles
- **Do not** use if the liquid has been frozen (even if thawed)
- **Do not** use the prefilled cartridge if you drop it, discover missing pieces, or it is damaged

Skyrizi[®] COMPLETE

Please see **Use and Important Safety Information** on pages 36-37. Please see full **Prescribing Information**, including **Medication Guide**, at https://www.rxabbvie.com/pdf/skyrizi_pi.pdf and discuss with your doctor.



Skyrizi[®]
risankizumab-rzaa

STEP 2: SET UP OBI

2C



Clean the smaller bottom tip of the prefilled cartridge

- Locate the smaller bottom tip of the prefilled cartridge
- Clean smaller bottom tip of the prefilled cartridge with an alcohol wipe.
Make sure to use the alcohol wipe to clean the center of the smaller bottom tip of the prefilled cartridge
- **Do not** touch the smaller bottom tip of the prefilled cartridge after cleaning



1-TO-1 SUPPORT WITH INJECTING

Reach out to your Nurse Ambassador over the phone, in video chat, or in person.
Just call [1.866.SKYRIZI](tel:18667597494) (1.866.759.7494).

Skyrizi[®] COMPLETE

Please see [Use and Important Safety Information](#) on pages 36-37.
Please see full [Prescribing Information](#), including [Medication Guide](#),
at https://www.rxabbvie.com/pdf/skyrizi_pi.pdf and discuss
with your doctor.

Skyrizi[®]
risankizumab-rzaa

STEP 2: SET UP OBI

2D

**Load the cleaned prefilled cartridge into the OBI**

- **Do not** twist or remove the prefilled cartridge top
- Insert the smaller bottom tip of the prefilled cartridge into the OBI first
- Firmly push down on the prefilled cartridge top until you hear a “click”
- After loading the prefilled cartridge, you may see a few drops of medicine on the back of the OBI. This is normal
- Make sure that you start the injection within 5 minutes after inserting the prefilled cartridge into the OBI. Waiting will dry out the medicine

Skyrizi[®] COMPLETE

Please see **Use and Important Safety Information** on pages 36-37. Please see full **Prescribing Information**, including **Medication Guide**, at https://www.rxabbvie.com/pdf/skyrizi_pi.pdf and discuss with your doctor.

Skyrizi[®]
risankizumab-rzaa

STEP 2: SET UP OBI

2E



Close the gray door

- Swing the gray door to the left, then squeeze firmly and listen for the gray door to “snap” shut
- The gray door should stay locked after loading the prefilled cartridge
- **Do not** close the gray door if the prefilled cartridge is not fully inserted or is missing
- Proceed without delay to Prepare to Inject



1-TO-1 SUPPORT WITH INJECTING

Reach out to your Nurse Ambassador over the phone, in video chat, or in person. Just call [1.866.SKYRIZI](tel:18667597494) (1.866.759.7494).

Skyrizi[®] COMPLETE

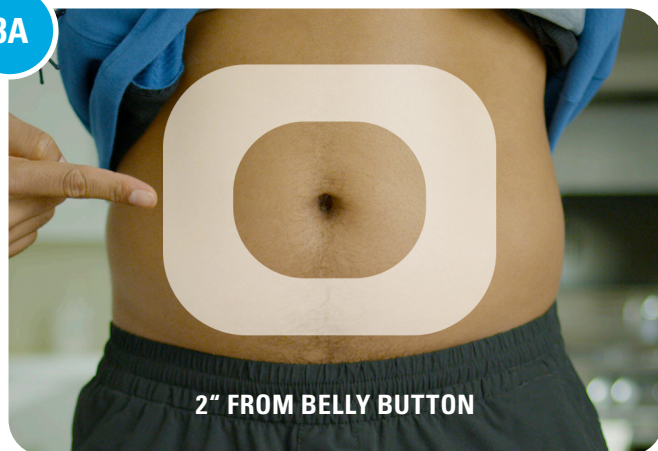
Please see [Use and Important Safety Information](#) on pages 36-37. Please see full [Prescribing Information](#), including [Medication Guide](#), at https://www.rxabbvie.com/pdf/skyrizi_pi.pdf and discuss with your doctor.

Skyrizi[®]
risankizumab-rzaa

STEP 3: PREPARE TO INJECT

Keep electronic devices, including cell phones, at least 12 inches (30 cm) from the OBI until injection is complete.

3A



STOMACH



THIGH

Pick your injection area

Locate a firm and flat area on your bare skin. Make sure the area is clear of clothing:

- Your stomach at least 2 inches from your navel (belly button)
- The front of your left thigh or your right thigh
- **Do not** inject into areas of the skin that naturally fold or bulge because the OBI could fall off during wear
- **Do not** inject into skin that is sore, bruised, red, hard, scarred, or has stretch marks, moles, or excessive hair. You can trim the excessive hair from the injection area

Directions in this section can be found in the **Instructions for Use** that comes with your OBI.

Skyrizi[®] COMPLETE

Please see **Use and Important Safety Information** on pages 36-37. Please see full **Prescribing Information**, including **Medication Guide**, at https://www.rxabbvie.com/pdf/skyrizi_pi.pdf and discuss with your doctor.

Skyrizi[®]
risankizumab-rzaa

STEP 3: PREPARE TO INJECT

3B



Clean the injection area

- Clean injection area with an alcohol wipe
- Allow the injection area to completely dry
- **Do not** touch the cleaned injection area before placing the OBI on the skin



1-TO-1 SUPPORT WITH INJECTING

Reach out to your Nurse Ambassador over the phone, in video chat, or in person. Just call [1.866.SKYRIZI](tel:1866SKYRIZI) (1.866.759.7494).

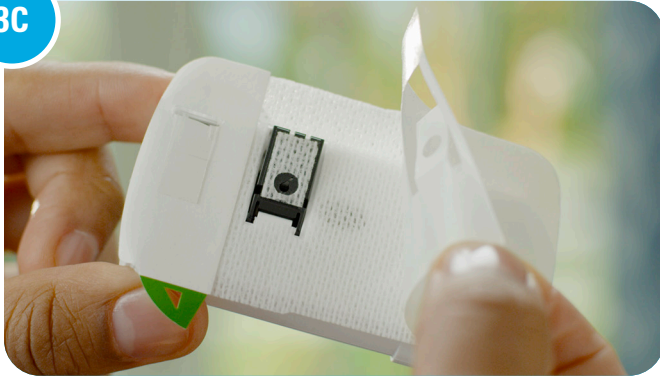
Skyrizi[®] COMPLETE

Please see [Use and Important Safety Information](#) on pages 36-37. Please see full [Prescribing Information](#), including [Medication Guide](#), at https://www.rxabbvie.com/pdf/skyrizi_pi.pdf and discuss with your doctor.

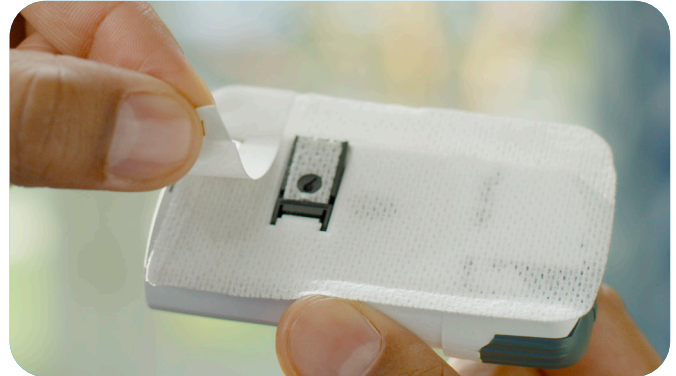
Skyrizi[®]
risankizumab-rzaa

STEP 3: PREPARE TO INJECT

3C



LARGE SECTION



SMALL SECTION

Peel both tabs to expose adhesive

- Turn the OBI over to find both green pull tabs

 **Avoid touching the needle cover (needle inside)**

- Peel away the large section using the green pull tab to expose the adhesive
- Peel away the small section using the green pull tab to expose the adhesive. This will remove the clear plastic strip, activating the OBI
- **Do not** pull the adhesive material off the OBI or allow the sticky side to fold and stick to itself
- Check the status light when the OBI beeps

**1-TO-1 SUPPORT WITH INJECTING**

Reach out to your Nurse Ambassador over the phone, in video chat, or in person.
Just call **1.866.SKYRIZI** (1.866.759.7494).

Skyrizi[®] COMPLETE

Please see **Use and Important Safety Information** on pages 36-37.
Please see full **Prescribing Information**, including **Medication Guide**,
at https://www.rxabbvie.com/pdf/skyrizi_pi.pdf and discuss
with your doctor.


Skyrizi[®]
risankizumab-rzaa

STEP 3: PREPARE TO INJECT



- The status light will flash blue when the OBI is activated
- If the status light does not flash blue, call **1.866.SKYRIZI** (1.866.759.7494)
- **Do not** press the gray start button yet
- **Do not** touch the needle cover or the needle



If the status light flashes red, and beeps are heard, the OBI is not working properly. Do not continue to use it.

Call **1.866.SKYRIZI** (1.866.759.7494) for assistance. If the OBI is attached to the body, carefully remove from the skin.

Skyrizi[®] COMPLETE

Please see **Use and Important Safety Information** on pages 36-37. Please see full **Prescribing Information**, including **Medication Guide**, at https://www.rxabbvie.com/pdf/skyrizi_pi.pdf and discuss with your doctor.

Skyrizi[®]
risankizumab-rzaa

STEP 3: PREPARE TO INJECT

3D



STOMACH



THIGH

Prepare the OBI for placement

- For the stomach, move and hold the skin to create a firm, flat surface for injection at least 2 inches from your navel (belly button). Make sure to adjust your posture (sit up straight) to avoid skin folds and bulges
- You do not need to pull the skin flat for the front of left thigh or right thigh
- Make sure to position the OBI so that you can see the blue status light



1-TO-1 SUPPORT WITH INJECTING

Reach out to your Nurse Ambassador over the phone, in video chat, or in person. Just call [1.866.SKYRIZI](tel:18667597494) (1.866.759.7494).

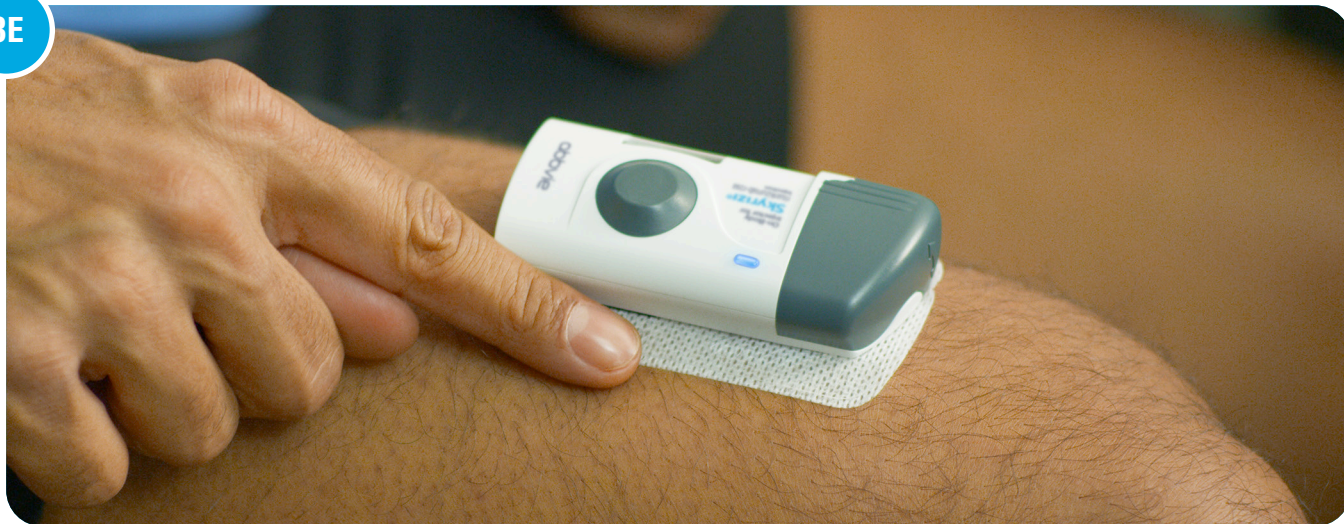
Skyrizi[®] COMPLETE

Please see [Use and Important Safety Information](#) on pages 36-37. Please see full [Prescribing Information](#), including [Medication Guide](#), at https://www.rxabbvie.com/pdf/skyrizi_pi.pdf and discuss with your doctor.

Skyrizi[®]
risankizumab-rzaa

STEP 3: PREPARE TO INJECT

3E



Place the OBI on your skin

- When the blue light flashes, the OBI is ready. Place the OBI onto the cleaned skin with the status light visible
- **Do not** place the OBI on clothes. Only place on bare skin
- Run your finger around the adhesive material to secure it. Make sure all of the adhesive is attached to your skin
- **Do not** move or adjust the OBI after it has been placed on your skin
- When the OBI is on your skin, proceed to Inject Medicine

Skyrizi[®] COMPLETE

Please see **Use and Important Safety Information** on pages 36-37. Please see full **Prescribing Information**, including **Medication Guide**, at https://www.rxabbvie.com/pdf/skyrizi_pi.pdf and discuss with your doctor.

Skyrizi[®]
risankizumab-rzaa

STEP 4: INJECT MEDICINE

4A



Start injection

- Firmly press the gray start button until you hear a click. Then release the gray start button
- **Do not** touch the gray start button until you place the OBI loaded with the prefilled cartridge onto your skin and are ready to inject. You can only press the start button 1 time
- You may feel a needle pinch
- Check the status light when the OBI beeps
- After starting the injection, the status light will continuously flash green
- You will hear pumping sounds as the OBI delivers the medicine
- **Do not** continue to use the OBI if status light flashes red and beeps. Carefully remove from skin if the status light flashes red. Call **1.866.SKYRIZI** (1.866.759.7494)

Directions in this section can be found in the **Instructions for Use** that comes with your OBI.

Skyrizi[®] COMPLETE

Please see **Use and Important Safety Information** on pages 36-37. Please see full **Prescribing Information**, including **Medication Guide**, at https://www.rxabbvie.com/pdf/skyrizi_pi.pdf and discuss with your doctor.

Skyrizi[®]
risankizumab-rzaa

STEP 4: INJECT MEDICINE

4B

**Wait for the injection to finish**

- It may take up to 5 minutes to complete the full dose of medicine. The OBI will automatically stop when the injection is finished
- During the injection:
 - the status light will continue to flash green
 - you will hear pumping sounds as the OBI continues delivering the medicine
 - moderate physical activities can be done, such as walking, reaching, and bending
- **Do not** continue to use the OBI if the status light flashes red and beeps. Carefully remove it from the skin if the status light flashes red and beeps. Call **1.866.SKYRIZI** (1.866.759.7494)

**1-TO-1 SUPPORT WITH INJECTING**

Reach out to your Nurse Ambassador over the phone, in video chat, or in person. Just call **1.866.SKYRIZI** (1.866.759.7494).

Skyrizi[®] COMPLETE

Please see **Use and Important Safety Information** on pages 36-37. Please see full **Prescribing Information**, including **Medication Guide**, at https://www.rxabbvie.com/pdf/skyrizi_pi.pdf and discuss with your doctor.

Skyrizi[®]
risankizumab-rzaa

STEP 4: INJECT MEDICINE

4C



Injection is finished

- The OBI will stop on its own
- After the injection is finished, you will hear beeps and the status light will change to solid green. Check the status light. If it has changed to solid green, this means that the injection is finished
- When the injection is finished, proceed to next step



1-TO-1 SUPPORT WITH INJECTING

Reach out to your Nurse Ambassador over the phone, in video chat, or in person. Just call **1.866.SKYRIZI** (1.866.759.7494).

Skyrizi[®] COMPLETE

Please see **Use and Important Safety Information** on pages 36-37. Please see full **Prescribing Information**, including **Medication Guide**, at https://www.rxabbvie.com/pdf/skyrizi_pi.pdf and discuss with your doctor.

Skyrizi[®]
risankizumab-rzaa

STEP 4: INJECT MEDICINE

4D

**Remove the OBI**

- **Do not** put your fingers on the back side of the OBI when removing it from your skin
- When the injection is done, grab the corner of the adhesive to carefully peel the OBI from the skin

**Avoid touching the needle cover or needle on the back of the OBI**

- After removing the OBI, you will hear several beeps and the status light will turn off
- The needle cover will cover the needle when the OBI is removed from the skin
- It is normal to see a few small drops of liquid on your skin after removing the OBI. If you see more than a few small drops of liquid left on your skin, call **1.866.SKYRIZI** (1.866.759.7494)
- Press a cotton ball or gauze pad over the injection site on your skin and hold for 10 seconds
- **Do not** rub the injection site
- Slight bleeding at the injection site is normal
- Proceed to Confirm and Dispose

Skyrizi[®] COMPLETE

Please see **Use and Important Safety Information** on pages 36-37. Please see full **Prescribing Information**, including **Medication Guide**, at https://www.rxabbvie.com/pdf/skyrizi_pi.pdf and discuss with your doctor.

Skyrizi[®]
risankizumab-rzaa

STEP 5: CONFIRM AND DISPOSE

5A



Check the OBI

- Inspect the medicine window and status light
- Check to see that the used white plunger fills the entire medicine window and the solid green light turns off, letting you know that all the medicine has been injected

⚠ If the used white plunger does not fill the window, call **1.866.SKYRIZI** (1.866.759.7494).

Directions in this section can be found in the **Instructions for Use** that comes with your OBI.



1-TO-1 SUPPORT WITH INJECTING

Reach out to your Nurse Ambassador over the phone, in video chat, or in person. Just call **1.866.SKYRIZI** (1.866.759.7494).

Skyrizi[®] COMPLETE

Please see **Use and Important Safety Information** on pages 36-37. Please see full **Prescribing Information**, including **Medication Guide**, at https://www.rxabbvie.com/pdf/skyrizi_pi.pdf and discuss with your doctor.

Skyrizi[®]
risankizumab-rzaa

STEP 5: CONFIRM AND DISPOSE

5B

**Put the used OBI in an FDA-cleared sharps disposal container right away after use**

- Leave the prefilled cartridge in the OBI
- **Do not** throw away (dispose of) the used OBI in your household trash
- For more information, see “Disposing of SKYRIZI” section of the **Instructions for Use**

**Don't have a sharps disposal container?**

You can get one through your Nurse Ambassador over the phone, in video chat, or in person. Just call **1.866.SKYRIZI** (1.866.759.7494), or **log in** to order.

Step-by-step support

You can receive a Sharps Container and Mail-back Disposal Kit with instructions on how to safely return it once it is full.

Skyrizi[®] COMPLETE

Please see **Use and Important Safety Information** on pages 36-37. Please see full **Prescribing Information**, including **Medication Guide**, at https://www.rxabbvie.com/pdf/skyrizi_pi.pdf and discuss with your doctor.

Skyrizi[®]
risankizumab-rzaa

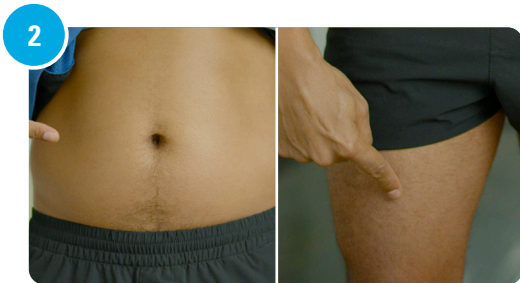
REMEMBER THE 5 P's

Now that you know the steps to injecting with your OBI, there's an easy way to remember them. Check these off as you complete your injection:



PREPARE

Prepare to inject by gathering alcohol wipes, a gauze pad or cotton ball, and your sharps disposal container, while your SKYRIZI is warming to room temperature outside of the fridge. Wash and dry your hands.



PICK

Pick the place on your body where you're going to inject.



PEEL

Peel the 2 green pull tabs to reveal the adhesive without touching the needle.

Skyrizi® COMPLETE

Please see [Use and Important Safety Information](#) on pages 36-37. Please see full [Prescribing Information](#), including [Medication Guide](#), at https://www.rxabbvie.com/pdf/skyrizi_pi.pdf and discuss with your doctor.

Skyrizi®
risankizumab-rzaa

REMEMBER THE 5 P's

4



PLACE

Place the OBI onto your skin. Make sure you can see the status light.

5



PRESS

Press and release the gray start button to begin. You'll see a flashing green light. When the injection is complete, the green light goes solid.

And lastly, pat yourself on the back for completing your injection.

Skyrizi[®] COMPLETE

Please see **Use and Important Safety Information** on pages 36-37. Please see full **Prescribing Information**, including **Medication Guide**, at https://www.rxabbvie.com/pdf/skyrizi_pi.pdf and discuss with your doctor.

Skyrizi[®]
risankizumab-rzaa

LET THE LIGHTS AND SOUNDS GUIDE YOU

Once you're ready to start your injection, the status light and different sounds of your OBI will guide you to the finish.



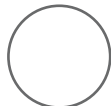
Before you push the large gray start button, your device will have a flashing blue light.



The light will flash green after you press the start button and the injection begins.



A solid green light means the injection is complete.



If the status light shows no light, your OBI is off.



If the status light on your OBI flashes red, call [1.866.SKYRIZI](tel:1866SKYRIZI) (1.866.759.7494) immediately and do not use it.



The beeping, clicking, and pumping sounds of the OBI help guide you through the different injection steps.

Skyrizi[®] COMPLETE

Please see [Use and Important Safety Information](#) on pages 36-37. Please see full [Prescribing Information](#), including [Medication Guide](#), at https://www.rxabbvie.com/pdf/skyrizi_pi.pdf and discuss with your doctor.

Skyrizi[®]
risankizumab-rzaa

MORE RESOURCES TO HELP WITH INJECTING

In addition to the Instructions for Use that comes with your OBI, Skyrizi Complete has other resources to help you with injecting:



A dedicated Nurse Ambassador to provide personalized training support



Step-by-step injection video on [SKYRIZI.com](https://www.skyrizi.com) you can watch if you ever need a refresher



Get started by connecting with your Nurse Ambassador for 1-to-1 support.
Call [1.866.SKYRIZI](tel:1866SKYRIZI) (1.866.759.7494).

Skyrizi[®] COMPLETE

Please see [Use and Important Safety Information](#) on pages 36-37.
Please see full [Prescribing Information](#), including [Medication Guide](#),
at https://www.rxabbvie.com/pdf/skyrizi_pi.pdf and discuss
with your doctor.

Skyrizi[®]
risankizumab-rzaa



A HANDY WAY TO ACCESS YOUR RESOURCES

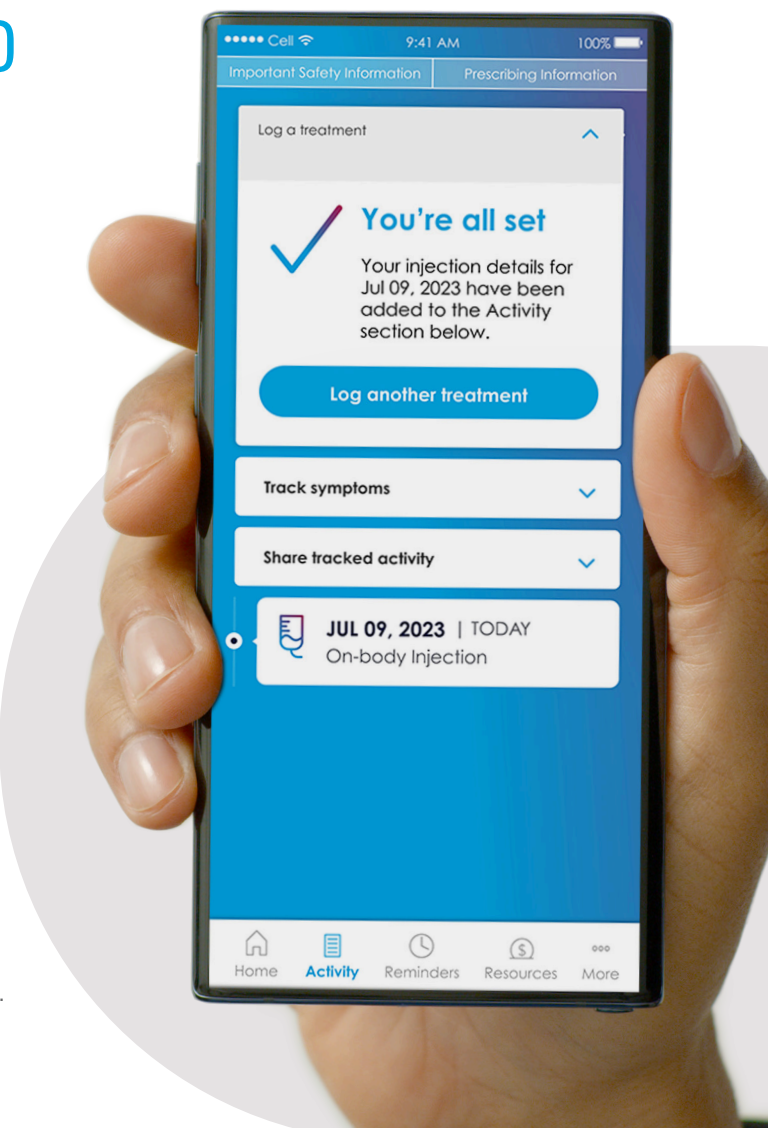
The Skyrizi Complete App lets you:

- ✓ Log your infusions and injections to help you stay on track
- ✓ Set medication and appointment reminders so you never miss a treatment
- ✓ Track your symptoms so you can easily share your progress with your doctor
- ✓ Order the resources you need to make the most of Skyrizi Complete



Start accessing your resources today.

Download the Skyrizi Complete App.



Skyrizi[®] COMPLETE

Please see **Use and Important Safety Information** on pages 36-37. Please see full **Prescribing Information**, including **Medication Guide**, at https://www.rxabbvie.com/pdf/skyrizi_pi.pdf and discuss with your doctor.

Skyrizi[®]
risankizumab-rzaa

USE AND IMPORTANT SAFETY INFORMATION ABOUT SKYRIZI® (risankizumab-rzaa)¹

SKYRIZI Use¹

SKYRIZI is a prescription medicine used to treat moderate to severe Crohn's disease in adults.

IMPORTANT SAFETY INFORMATION¹

What is the most important information I should know about SKYRIZI® (risankizumab-rzaa)?

SKYRIZI is a prescription medicine that may cause serious side effects, including:

Serious allergic reactions:

- Stop using SKYRIZI and get emergency medical help right away if you get any of the following symptoms of a serious allergic reaction:
 - fainting, dizziness, feeling lightheaded (low blood pressure)
 - chest tightness
 - swelling of your face, eyelids, lips, mouth, tongue, or throat
 - skin rash, hives
 - trouble breathing or throat tightness
 - itching

Infections:

SKYRIZI may lower the ability of your immune system to fight infections and may increase your risk of infections. Your healthcare provider should check you for infections and tuberculosis (TB) before starting treatment with SKYRIZI and may treat you for TB before you begin treatment with SKYRIZI if you have a history of TB or have active TB. Your healthcare provider should watch you closely for signs and symptoms of TB during and after treatment with SKYRIZI.

- Tell your healthcare provider right away if you have an infection or have symptoms of an infection, including:
 - fever, sweats, or chills
 - warm, red, or painful skin or sores on your body different from your psoriasis
 - cough
 - weight loss
 - shortness of breath
 - diarrhea or stomach pain
 - blood in your mucus (phlegm)
 - burning when you urinate or urinating more often than normal
 - muscle aches

Do not use SKYRIZI if you are allergic to risankizumab-rzaa or any of the ingredients in SKYRIZI.

Please see full **Prescribing Information**, including **Medication Guide**, at https://www.rxabbvie.com/pdf/skyrizi_pi.pdf and discuss with your doctor.


Skyrizi®
risankizumab-rzaa

Before using SKYRIZI, tell your healthcare provider about all of your medical conditions, including if you:

- have any of the conditions or symptoms listed in the section “What is the most important information I should know about SKYRIZI?”
- have an infection that does not go away or that keeps coming back.
- have TB or have been in close contact with someone with TB.
- have recently received or are scheduled to receive an immunization (vaccine). Medicines that interact with the immune system may increase your risk of getting an infection after receiving live vaccines. You should avoid receiving live vaccines right before, during, or right after treatment with SKYRIZI. Tell your healthcare provider that you are taking SKYRIZI before receiving a vaccine.
- are pregnant or plan to become pregnant. It is not known if SKYRIZI can harm your unborn baby.
- are breastfeeding or plan to breastfeed. It is not known if SKYRIZI passes into your breast milk.

Tell your healthcare provider about all the medicines you take, including prescription and over-the-counter medicines, vitamins, and herbal supplements.

What are the possible side effects of SKYRIZI?

SKYRIZI may cause serious side effects. See “What is the most important information I should know about SKYRIZI?”

Liver problems in Crohn’s disease: A person with Crohn’s disease who received SKYRIZI by intravenous infusion developed changes in liver blood tests with a rash that led to hospitalization. Your doctor will do blood tests to check your liver before, during, and up to 12 weeks of treatment and may stop treatment with SKYRIZI if you develop liver problems. Tell your doctor right away if you notice any of the following symptoms: unexplained rash, nausea, vomiting, stomach (abdominal) pain, tiredness (fatigue), loss of appetite, yellowing of the skin and eyes (jaundice), and dark urine.

The most common side effects of SKYRIZI in people treated for Crohn’s disease include: upper respiratory infections, injection site reactions, fever, headache, stomach (abdominal) pain, back pain, joint pain, and low red blood cells (anemia).

These are not all the possible side effects of SKYRIZI. Call your doctor for medical advice about side effects.

Use SKYRIZI exactly as your healthcare provider tells you to use it.

SKYRIZI is available in a 600 mg/10 mL intravenous infusion and a 360 mg/2.4 mL single-dose prefilled cartridge with on-body injector.

You are encouraged to report negative side effects of prescription drugs to the FDA.

Visit www.fda.gov/medwatch or call **1-800-FDA-1088**.

If you are having difficulty paying for your medicine, AbbVie may be able to help.

Visit AbbVie.com/myAbbVieAssist to learn more.

Reference: 1. SKYRIZI [package insert]. North Chicago, IL: AbbVie Inc.

Please see full **Prescribing Information**, including **Medication Guide**, at https://www.rxabbvie.com/pdf/skyrizi_pi.pdf and discuss with your doctor.