



Skyrizi[®]

risankizumab-rzaa

» **NOW APPROVED** «

**FOR ADULTS WITH MODERATE TO SEVERE
CROHN'S DISEASE**

SKYRIZI Use¹

SKYRIZI is a prescription medicine used to treat moderate to severe Crohn's disease in adults.

SAFETY CONSIDERATIONS¹

SKYRIZI may cause serious side effects, including:

- **Serious allergic reactions:** Stop using SKYRIZI and get emergency medical help right away if you get any symptoms of a serious allergic reaction.
 - **Infections:** SKYRIZI may increase your risk of infections. Before starting treatment, your doctor should check you for infections and tuberculosis. Tell your doctor right away if you have an infection or symptoms of one.
- Do not use SKYRIZI if you are** allergic to risankizumab-rzaa or any of the ingredients in SKYRIZI.
- Also, tell your doctor if you plan to or recently received a vaccine.
 - **Liver problems in Crohn's disease:** A person with Crohn's disease who received SKYRIZI by intravenous infusion developed changes in liver blood tests with a rash that led to hospitalization. Your doctor will do liver blood tests before and during treatment and may stop treatment with SKYRIZI if you develop liver problems.

Please see additional Important Safety Information on page 12.

Please see full Prescribing Information, including Medication Guide, at
https://www.rxabbvie.com/pdf/skyrizi_pi.pdf **and discuss with your doctor.**



Skyrizi[®]
risankizumab-rzaa

FOR ADULTS WITH MODERATE TO SEVERE CROHN'S DISEASE

SKYRIZI IS A NEW CROHN'S TREATMENT THAT WORKS DIFFERENTLY

SKYRIZI is the first treatment for Crohn's that works differently by specifically targeting the interleukin-23 (IL-23) protein, which is one of the key proteins responsible for inflammation. By targeting IL-23, SKYRIZI can help reduce the excess inflammation that may contribute to Crohn's symptoms.



**SKYRIZI can help
people achieve:**



**Symptom
Relief**



**Lasting Remission
at 1 year**



Endoscopic Improvement
Meaning at least a 50% improvement
of the intestinal lining

SKYRIZI Use¹

SKYRIZI is a prescription medicine used to treat moderate to severe Crohn's disease in adults.

SAFETY CONSIDERATIONS¹

SKYRIZI may cause serious side effects, including:

- **Serious allergic reactions:** Stop using SKYRIZI and get emergency medical help right away if you get any symptoms of a serious allergic reaction.
 - **Infections:** SKYRIZI may increase your risk of infections. Before starting treatment, your doctor should check you for infections and tuberculosis. Tell your doctor right away if you have an infection or symptoms of one.
- Do not use SKYRIZI if you are** allergic to risankizumab-rzaa or any of the ingredients in SKYRIZI.
- Also, tell your doctor if you plan to or recently received a vaccine.
 - **Liver problems in Crohn's disease:** A person with Crohn's disease who received SKYRIZI by intravenous infusion developed changes in liver blood tests with a rash that led to hospitalization. Your doctor will do liver blood tests before and during treatment and may stop treatment with SKYRIZI if you develop liver problems.

Please see additional Important Safety Information on page 12.

Please see full Prescribing Information, including Medication Guide, at https://www.rxabbvie.com/pdf/skyrizi_pi.pdf and discuss with your doctor.


Skyrizi[®]
risankizumab-rzaa

KEY TREATMENT GOALS FOR CROHN'S



What are key treatment goals?

Because Crohn's is progressive, meaning it can get worse over time, it's important to set treatment goals. **Symptom relief** and **remission** are key goals, but there can still be inflammation in the intestinal lining. That's why it is important to also include **endoscopic improvement** as a treatment goal.



What is endoscopic improvement?

Endoscopic improvement means that your doctor can see visible improvement of the intestinal lining. Talk to your doctor about treatment goals and discuss a treatment option that is right for you.



Some things your doctor may look for:

Along with symptom relief and remission, your doctor may also be looking for visible endoscopic improvement of the intestinal lining. As part of your treatment plan, your doctor may do multiple endoscopies over time to look at the level of visible damage on your intestinal lining.

SKYRIZI Use¹

SKYRIZI is a prescription medicine used to treat moderate to severe Crohn's disease in adults.

SAFETY CONSIDERATIONS¹

SKYRIZI may cause serious side effects, including:

- **Serious allergic reactions:** Stop using SKYRIZI and get emergency medical help right away if you get any symptoms of a serious allergic reaction.
 - **Infections:** SKYRIZI may increase your risk of infections. Before starting treatment, your doctor should check you for infections and tuberculosis. Tell your doctor right away if you have an infection or symptoms of one.
- Do not use SKYRIZI if you are** allergic to risankizumab-rzaa or any of the ingredients in SKYRIZI.
- Also, tell your doctor if you plan to or recently received a vaccine.
 - **Liver problems in Crohn's disease:** A person with Crohn's disease who received SKYRIZI by intravenous infusion developed changes in liver blood tests with a rash that led to hospitalization. Your doctor will do liver blood tests before and during treatment and may stop treatment with SKYRIZI if you develop liver problems.

Please see additional Important Safety Information on page 12.

Please see full Prescribing Information, including Medication Guide, at https://www.rxabbvie.com/pdf/skyrizi_pi.pdf and discuss with your doctor.

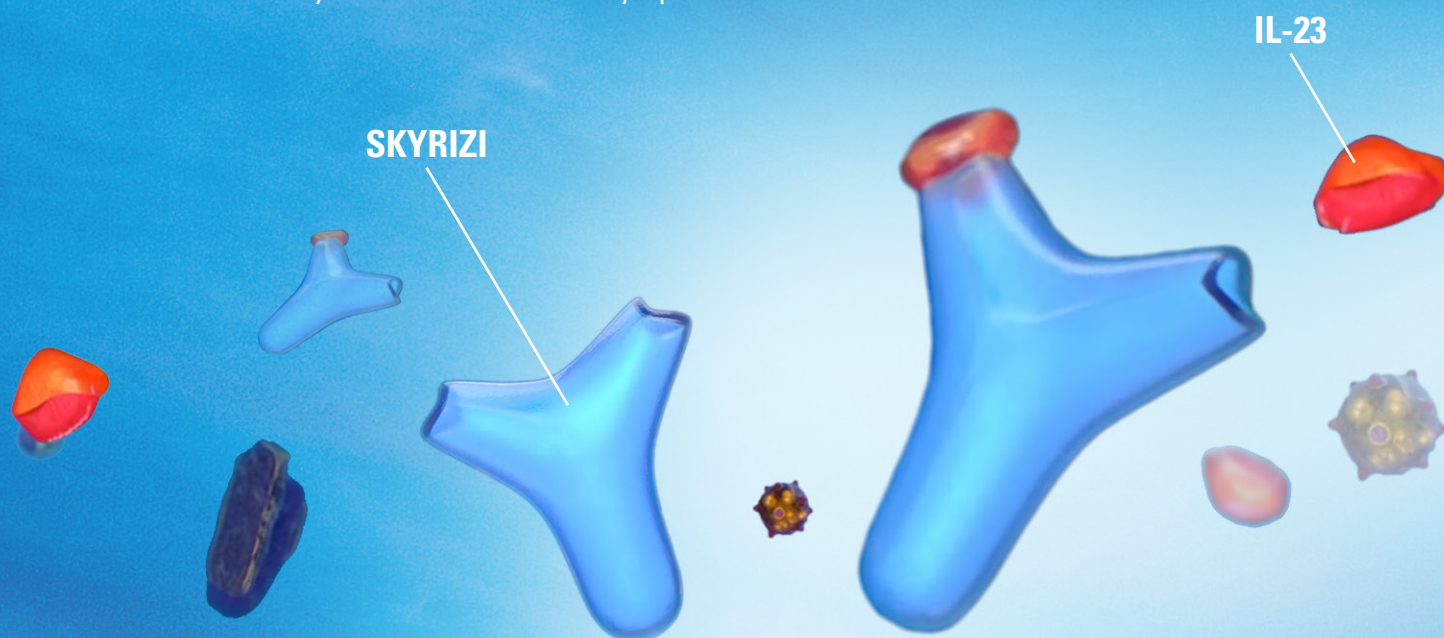

Skyrizi[®]
risankizumab-rzaa

FOR ADULTS WITH MODERATE TO SEVERE CROHN'S DISEASE

SKYRIZI WORKS DIFFERENTLY

SKYRIZI is a treatment for moderate to severe Crohn's disease that works differently. **It specifically targets and binds to interleukin-23 (IL-23); one of the key proteins responsible for inflammation that may contribute to Crohn's symptoms.**

While the exact causes of Crohn's are not fully known, some possible contributing factors include family history, the environment, and an overactive immune system. The immune system is where IL-23 is naturally produced to cause inflammation as part of your body's response to threats. But when your body produces too much IL-23, it can cause excess inflammation that may contribute to Crohn's symptoms.



[Learn More](#)

SKYRIZI Use¹

SKYRIZI is a prescription medicine used to treat moderate to severe Crohn's disease in adults.

SAFETY CONSIDERATIONS¹

SKYRIZI may cause serious side effects, including:

- **Serious allergic reactions:** Stop using SKYRIZI and get emergency medical help right away if you get any symptoms of a serious allergic reaction.
 - **Infections:** SKYRIZI may increase your risk of infections. Before starting treatment, your doctor should check you for infections and tuberculosis. Tell your doctor right away if you have an infection or symptoms of one.
- Do not use SKYRIZI if you are** allergic to risankizumab-rzaa or any of the ingredients in SKYRIZI.
- Also, tell your doctor if you plan to or recently received a vaccine.
 - **Liver problems in Crohn's disease:** A person with Crohn's disease who received SKYRIZI by intravenous infusion developed changes in liver blood tests with a rash that led to hospitalization. Your doctor will do liver blood tests before and during treatment and may stop treatment with SKYRIZI if you develop liver problems.

Please see additional Important Safety Information on page 12.

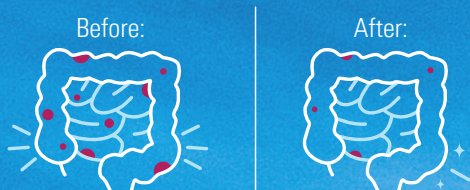
Please see full Prescribing Information, including Medication Guide, at https://www.rxabbvie.com/pdf/skyrizi_pi.pdf and discuss with your doctor.


Skyrizi[®]
risankizumab-rzaa

SKYRIZI RESULTS

SKYRIZI provides clinical remission and endoscopic response results

SKYRIZI achieved both **CLINICAL REMISSION** and **ENDOSCOPIC RESPONSE**, as primary measures of three clinical trials. Achieving endoscopic response, also known as endoscopic improvement, means that your doctor can see **at least a 50% visible improvement of the intestinal lining**.



Symptom relief with SKYRIZI

In clinical trials:

- **SKYRIZI helped to reduce bowel movement frequency and abdominal pain** at Week 12
- A majority of patients on SKYRIZI had **significant symptom relief** at Week 12 and some had symptom relief as early as Week 4

Talk with your doctor to see if SKYRIZI is right for you

[Learn More](#)

Patients experienced early and lasting results on SKYRIZI

Achieved **CLINICAL REMISSION** meaning few or no symptoms

CD-1 Study at Week 12

600 mg IV

45%

25% placebo

CD-3 Study at Week 52

360 mg/2.4 mL injection

57%

46% placebo

Achieved **ENDOSCOPIC RESPONSE** meaning at least a 50% visible improvement of the intestinal lining

CD-1 Study at Week 12

600 mg IV

40%

12% placebo

CD-3 Study at Week 52

360 mg/2.4 mL injection

48%

22% placebo

At 12 weeks, in a second induction clinical study (CD-2, n=191) with patients who failed at least one biologic, **42%** of patients on SKYRIZI achieved **CLINICAL REMISSION** vs. 20% on placebo and **29%** of patients on SKYRIZI saw **ENDOSCOPIC RESPONSE** vs. 11% on placebo.

Individual results may vary.

CD-1 (n=336) and CD-3 (n=117) clinical studies were a mixed population of patients with or without prior biologic failure. Patients who achieved a clinical response (CR-100) in the induction studies (CD-1 and CD-2) continued onto the maintenance study (CD-3).

SKYRIZI Use¹

SKYRIZI is a prescription medicine used to treat moderate to severe Crohn's disease in adults.

SAFETY CONSIDERATIONS¹

SKYRIZI may cause serious side effects, including:

- **Serious allergic reactions:** Stop using SKYRIZI and get emergency medical help right away if you get any symptoms of a serious allergic reaction.
 - **Infections:** SKYRIZI may increase your risk of infections. Before starting treatment, your doctor should check you for infections and tuberculosis. Tell your doctor right away if you have an infection or symptoms of one.
- Do not use SKYRIZI if you are** allergic to risankizumab-rzaa or any of the ingredients in SKYRIZI.
- Also, tell your doctor if you plan to or recently received a vaccine.
 - **Liver problems in Crohn's disease:** A person with Crohn's disease who received SKYRIZI by intravenous infusion developed changes in liver blood tests with a rash that led to hospitalization. Your doctor will do liver blood tests before and during treatment and may stop treatment with SKYRIZI if you develop liver problems.

Please see additional Important Safety Information on page 12.

Please see full Prescribing Information, including Medication Guide, at https://www.rxabbvie.com/pdf/skyrizi_pi.pdf and discuss with your doctor.


Skyrizi[®]
risankizumab-rzaa

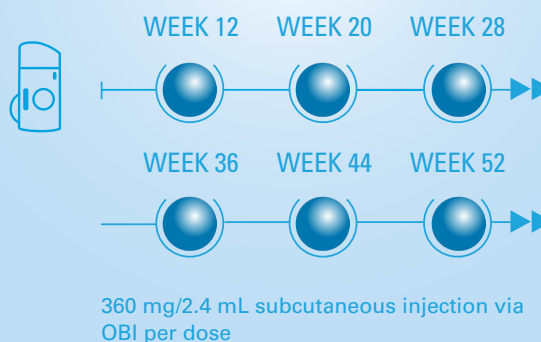
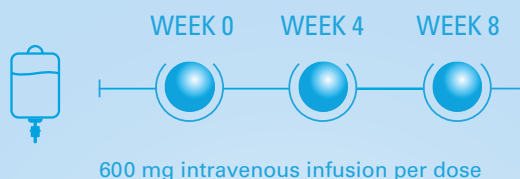
SKYRIZI DOSING

3 starter doses

Your SKYRIZI treatment begins with 3 doses through a vein in the arm (intravenous infusion): 1 dose every 4 weeks. You'll receive the infusions in the doctor's office, in a hospital, or at an infusion center by a healthcare provider.

Then only 6 doses a year

4 weeks after your third infusion, you will begin your maintenance treatment. After receiving training from your healthcare provider on how to inject SKYRIZI, you can administer your treatment at home using the prefilled cartridge with SKYRIZI On-Body Injector (OBI). You'll inject 360 mg under the skin (subcutaneous injection) once every 8 weeks, as prescribed by your doctor.



[Learn More](#)

SKYRIZI Use¹

SKYRIZI is a prescription medicine used to treat moderate to severe Crohn's disease in adults.

SAFETY CONSIDERATIONS¹

SKYRIZI may cause serious side effects, including:

- **Serious allergic reactions:** Stop using SKYRIZI and get emergency medical help right away if you get any symptoms of a serious allergic reaction.
 - **Infections:** SKYRIZI may increase your risk of infections. Before starting treatment, your doctor should check you for infections and tuberculosis. Tell your doctor right away if you have an infection or symptoms of one.
- Do not use SKYRIZI if you are** allergic to risankizumab-rzaa or any of the ingredients in SKYRIZI.
- Also, tell your doctor if you plan to or recently received a vaccine.
 - **Liver problems in Crohn's disease:** A person with Crohn's disease who received SKYRIZI by intravenous infusion developed changes in liver blood tests with a rash that led to hospitalization. Your doctor will do liver blood tests before and during treatment and may stop treatment with SKYRIZI if you develop liver problems.

Please see additional Important Safety Information on page 12.

Please see full Prescribing Information, including Medication Guide, at https://www.rxabbvie.com/pdf/skyrizi_pi.pdf and discuss with your doctor.


Skyrizi[®]
risankizumab-rzaa

THE NEW SKYRIZI ON-BODY INJECTOR (OBI)

The SKYRIZI On-Body Injector (OBI) is a device that allows you to administer SKYRIZI after you receive training from your healthcare provider on how to inject. 4 weeks after your third infusion (at week 12), you'll be ready to start injecting at home. You'll do this every 8 weeks. Each injection is completed in 5 minutes after preparation. Audio and visual cues let you know when the full dose has been delivered.

On-body injections are taken at home, every 8 weeks after proper training from a healthcare professional.

Designed with you in mind



COMPACT SIZE

Small enough to fit in the palm of the hand.



HANDS-FREE

While adhered to the body and after activation. Moderate physical activities can be done such as walking, reaching, and bending.



HIDDEN NEEDLE

Discreet injection so you don't see the needle.



DOSE DELIVERED IN 5 MINUTES

Completes the injection in set time after preparation and application are complete.



AUDIO AND VISUAL CUES

Notifies when full dose has been delivered.



Read the Instructions for Use
before you start using SKYRIZI >

SKYRIZI Use¹

SKYRIZI is a prescription medicine used to treat moderate to severe Crohn's disease in adults.

SAFETY CONSIDERATIONS¹

SKYRIZI may cause serious side effects, including:

- **Serious allergic reactions:** Stop using SKYRIZI and get emergency medical help right away if you get any symptoms of a serious allergic reaction.
 - **Infections:** SKYRIZI may increase your risk of infections. Before starting treatment, your doctor should check you for infections and tuberculosis. Tell your doctor right away if you have an infection or symptoms of one.
- Do not use SKYRIZI if you are** allergic to risankizumab-rzaa or any of the ingredients in SKYRIZI.
- Also, tell your doctor if you plan to or recently received a vaccine.
 - **Liver problems in Crohn's disease:** A person with Crohn's disease who received SKYRIZI by intravenous infusion developed changes in liver blood tests with a rash that led to hospitalization. Your doctor will do liver blood tests before and during treatment and may stop treatment with SKYRIZI if you develop liver problems.

Please see additional Important Safety Information on page 12.

Please see full Prescribing Information, including Medication Guide, at https://www.rxabbvie.com/pdf/skyrizi_pi.pdf and discuss with your doctor.


Skyrizi[®]
risankizumab-rzaa

MORE INFORMATION ON THE SKYRIZI ON-BODY INJECTOR

Your healthcare provider should show you how to inject SKYRIZI using the On-Body Injector. See the SKYRIZI Instructions for Use for the full set of detailed instructions on the preparation and administration of SKYRIZI.

Here are **5 P's** to help you remember:



PREPARE

Gather alcohol wipes, gauze pads or cotton balls, and sharps disposal container.



PICK

Pick a place on the thigh or abdomen to inject.



PEEL

Peel the 2 green pull tabs to reveal the adhesive without touching the needle.



PLACE

Place the OBI onto the skin. Ensure that the status light is visible.



PRESS

Press and release the gray start button to begin. A flashing green light will appear. When the injection is complete, the green light goes solid.

In a patient survey,

93% of patients reported the OBI was “Easy To Use” after the first use

In an ongoing survey of the SKYRIZI On-Body Injector (OBI), patient-reported experience was collected using a Self-Injection Assessment Questionnaire (SIAQ). Patients were given the questionnaire after injection training by a healthcare provider (HCP) and following their first self-injection. 42 out of 45 patients reported the OBI was either “easy” or “very easy” to use.

HOW TO USE SKYRIZI: See the detailed “Instructions for Use” that comes with SKYRIZI for information on how to prepare and inject a dose of SKYRIZI, and how to properly throw away (dispose of) a used SKYRIZI prefilled cartridge with On-Body Injector. Before self-injecting with SKYRIZI prefilled cartridge with On-Body Injector, your healthcare provider should show you how to inject SKYRIZI.

You can watch the SKYRIZI OBI Training Video at [WatchSkyriziOBI.com](https://www.rxabbvie.com/watchskyriziobi.com)

SKYRIZI Use¹

SKYRIZI is a prescription medicine used to treat moderate to severe Crohn's disease in adults.

SAFETY CONSIDERATIONS¹

SKYRIZI may cause serious side effects, including:

- **Serious allergic reactions:** Stop using SKYRIZI and get emergency medical help right away if you get any symptoms of a serious allergic reaction.
 - **Infections:** SKYRIZI may increase your risk of infections. Before starting treatment, your doctor should check you for infections and tuberculosis. Tell your doctor right away if you have an infection or symptoms of one.
- Do not use SKYRIZI if you are** allergic to risankizumab-rzaa or any of the ingredients in SKYRIZI.
- Also, tell your doctor if you plan to or recently received a vaccine.
 - **Liver problems in Crohn's disease:** A person with Crohn's disease who received SKYRIZI by intravenous infusion developed changes in liver blood tests with a rash that led to hospitalization. Your doctor will do liver blood tests before and during treatment and may stop treatment with SKYRIZI if you develop liver problems.

Please see additional Important Safety Information on page 12.

Please see full Prescribing Information, including Medication Guide, at https://www.rxabbvie.com/pdf/skyrizi_pi.pdf and discuss with your doctor.


Skyrizi[®]
risankizumab-rzaa

INFORMATION TO KNOW



Starting a new treatment means **balancing the risks and benefits**. Talk to your doctor. Continue scrolling for a helpful discussion guide.

The most common side effects of SKYRIZI in people treated for Crohn's disease include:

- upper respiratory infections
- injection site reactions
- fever
- headache
- stomach (abdominal) pain
- back pain
- joint pain
- low red blood cells (anemia)

These are not all the possible side effects of SKYRIZI. Ask your doctor for medical advice about side effects.

SKYRIZI Use¹

SKYRIZI is a prescription medicine used to treat moderate to severe Crohn's disease in adults.

SAFETY CONSIDERATIONS¹

SKYRIZI may cause serious side effects, including:

- **Serious allergic reactions:** Stop using SKYRIZI and get emergency medical help right away if you get any symptoms of a serious allergic reaction.
 - **Infections:** SKYRIZI may increase your risk of infections. Before starting treatment, your doctor should check you for infections and tuberculosis. Tell your doctor right away if you have an infection or symptoms of one.
- Do not use SKYRIZI if you are** allergic to risankizumab-rzaa or any of the ingredients in SKYRIZI.
- Also, tell your doctor if you plan to or recently received a vaccine.
 - **Liver problems in Crohn's disease:** A person with Crohn's disease who received SKYRIZI by intravenous infusion developed changes in liver blood tests with a rash that led to hospitalization. Your doctor will do liver blood tests before and during treatment and may stop treatment with SKYRIZI if you develop liver problems.

Please see additional Important Safety Information on page 12.

Please see full Prescribing Information, including Medication Guide, at https://www.rxabbvie.com/pdf/skyrizi_pi.pdf and discuss with your doctor.


Skyrizi[®]
risankizumab-rzaa

FOR ADULTS WITH MODERATE TO SEVERE CROHN'S DISEASE

PARTNER WITH YOUR DOCTOR START THE CONVERSATION



By having more productive conversations with your doctor, you can work together on a treatment plan that's right for you. Start with these questions. Be sure to write down the answers your doctor provides.

This is how my Crohn's symptoms affect my daily life:

Why are endoscopic improvement and clinical remission important treatment goals?

Can SKYRIZI help me achieve my treatment goals?

What is the most important risk information I should know about SKYRIZI?

SKYRIZI Use¹

SKYRIZI is a prescription medicine used to treat moderate to severe Crohn's disease in adults.

SAFETY CONSIDERATIONS¹

SKYRIZI may cause serious side effects, including:

- **Serious allergic reactions:** Stop using SKYRIZI and get emergency medical help right away if you get any symptoms of a serious allergic reaction.
 - **Infections:** SKYRIZI may increase your risk of infections. Before starting treatment, your doctor should check you for infections and tuberculosis. Tell your doctor right away if you have an infection or symptoms of one.
- Do not use SKYRIZI if you are** allergic to risankizumab-rzaa or any of the ingredients in SKYRIZI.
- Also, tell your doctor if you plan to or recently received a vaccine.
 - **Liver problems in Crohn's disease:** A person with Crohn's disease who received SKYRIZI by intravenous infusion developed changes in liver blood tests with a rash that led to hospitalization. Your doctor will do liver blood tests before and during treatment and may stop treatment with SKYRIZI if you develop liver problems.

Please see additional Important Safety Information on page 12.

Please see full Prescribing Information, including Medication Guide, at https://www.rxabbvie.com/pdf/skyrizi_pi.pdf and discuss with your doctor.


risankizumab-rzaa

SUPPORT AND RESOURCES

Skyrizi[®] COMPLETE

When taking SKYRIZI, you have a world of personalized support available to you with Sskyrizi Complete. You'll get access to a range of resources, including a **dedicated Sskyrizi Complete Nurse Ambassador*** to help you start and stay on track with your prescribed Crohn's treatment plan.



Once your doctor gives you a prescription for SKYRIZI, you are eligible to enroll in Sskyrizi Complete. Here's how:

- Ask your doctor's office to enroll you
- Call **1.866.SKYRIZI** (1.866.759.7494)
- Sign up at **SKYRIZI.com/signup**



Pay as little as \$5[†]
per dose

The **Sskyrizi Complete Mastercard[®]** covers eligible out-of-pocket costs for both your infusions and the SKYRIZI On-Body Injector. It may bring the cost of your SKYRIZI infusions and injections down to **as little as \$5 per treatment.[†]**



To learn more about potential savings and get answers to your insurance questions, call Sskyrizi Complete at **1.866.SKYRIZI** (1.866.759.7494).

Sskyrizi Complete Resources

*Nurse Ambassadors are provided by AbbVie and do not work under the direction of your health care professional (HCP) or give medical advice. They are trained to direct patients to their HCP for treatment-related advice, including further referrals.

[†]Eligibility: Available to patients with commercial insurance coverage for SKYRIZI[®] (risankizumab-rzaa) who meet eligibility criteria. This co-pay assistance program is not available to patients receiving prescription reimbursement under any federal, state, or government-funded insurance programs (for example, Medicare [including Part D], Medicare Advantage, Medigap, Medicaid, TRICARE, Department of Defense, or Veterans Affairs programs) or where prohibited by law. Offer subject to change or termination without notice. Restrictions, including monthly maximums, may apply. This is not health insurance. For full Terms and Conditions, visit <https://www.SKYRIZICDSavingsCard.com>. To learn about AbbVie's privacy practices and your privacy choices, visit <https://www.abbvie.com/privacy.html>

Banking services provided by FLCBank, Member FDIC. The Sskyrizi Complete Savings Mastercard[®] is issued by FLCBank pursuant to a license Mastercard Inc. and may be used everywhere Mastercard cards are accepted.

Please see additional Important Safety Information on page 12.
Please see full Prescribing Information, including Medication Guide, at https://www.rxabbvie.com/pdf/skyrizi_pi.pdf and discuss with your doctor.


Skyrizi[®]
risankizumab-rzaa

IMPORTANT SAFETY INFORMATION¹

What is the most important information I should know about SKYRIZI® (risankizumab-rzaa)?

SKYRIZI is a prescription medicine that may cause serious side effects, including:

Serious allergic reactions:

- Stop using SKYRIZI and get emergency medical help right away if you get any of the following symptoms of a serious allergic reaction:
 - fainting, dizziness, feeling lightheaded (low blood pressure)
 - swelling of your face, eyelids, lips, mouth, tongue, or throat
 - trouble breathing or throat tightness
 - chest tightness
 - skin rash, hives
 - itching

Infections:

SKYRIZI may lower the ability of your immune system to fight infections and may increase your risk of infections. Your healthcare provider should check you for infections and tuberculosis (TB) before starting treatment with SKYRIZI and may treat you for TB before you begin treatment with SKYRIZI if you have a history of TB or have active TB. Your healthcare provider should watch you closely for signs and symptoms of TB during and after treatment with SKYRIZI.

- Tell your healthcare provider right away if you have an infection or have symptoms of an infection, including:
 - fever, sweats, or chills
 - cough
 - shortness of breath
 - blood in your mucus (phlegm)
 - muscle aches
 - warm, red, or painful skin or sores on your body different from your psoriasis
 - weight loss
 - diarrhea or stomach pain
 - burning when you urinate or urinating more often than normal

Do not use SKYRIZI if you are allergic to risankizumab-rzaa or any of the ingredients in SKYRIZI.

Before using SKYRIZI, tell your healthcare provider about all of your medical conditions, including if you:

- have any of the conditions or symptoms listed in the section “What is the most important information I should know about SKYRIZI?”
- have an infection that does not go away or that keeps coming back.
- have TB or have been in close contact with someone with TB.

- have recently received or are scheduled to receive an immunization (vaccine). Medicines that interact with the immune system may increase your risk of getting an infection after receiving live vaccines. You should avoid receiving live vaccines right before, during, or right after treatment with SKYRIZI. Tell your healthcare provider that you are taking SKYRIZI before receiving a vaccine.
- are pregnant or plan to become pregnant. It is not known if SKYRIZI can harm your unborn baby.
- are breastfeeding or plan to breastfeed. It is not known if SKYRIZI passes into your breast milk.

Tell your healthcare provider about all the medicines you take, including prescription and over-the-counter medicines, vitamins, and herbal supplements.

What are the possible side effects of SKYRIZI?

SKYRIZI may cause serious side effects. See “What is the most important information I should know about SKYRIZI?”

Liver problems in Crohn’s disease: A person with Crohn’s disease who received SKYRIZI by intravenous infusion developed changes in liver blood tests with a rash that led to hospitalization. Your doctor will do blood tests to check your liver before, during, and up to 12 weeks of treatment and may stop treatment with SKYRIZI if you develop liver problems. Tell your doctor right away if you notice any of the following symptoms: unexplained rash, nausea, vomiting, stomach (abdominal) pain, tiredness (fatigue), loss of appetite, yellowing of the skin and eyes (jaundice), and dark urine.

The most common side effects of SKYRIZI in people treated for Crohn’s disease include: upper respiratory infections, injection site reactions, fever, headache, stomach (abdominal) pain, back pain, joint pain, and low red blood cells (anemia).

These are not all the possible side effects of SKYRIZI. Call your doctor for medical advice about side effects. Use SKYRIZI exactly as your healthcare provider tells you to use it.

SKYRIZI is available in a 600 mg/10 mL intravenous infusion and a 360 mg/2.4 mL single-dose prefilled cartridge with on-body injector.

You are encouraged to report negative side effects of prescription drugs to the FDA. Visit www.fda.gov/medwatch or call 1-800-FDA-1088.

If you are having difficulty paying for your medicine, AbbVie may be able to help. Visit <https://www.AbbVie.com/myAbbVieAssist> to learn more.

Reference: 1. SKYRIZI [package insert]. North Chicago, IL: AbbVie Inc.



Skyrizi®

risankizumab-rzaa

» **NOW APPROVED** «

**FOR ADULTS WITH MODERATE TO SEVERE
CROHN'S DISEASE**

**Talk with your doctor to see
if SKYRIZI is right for you**



Scan to learn more about **SKYRIZI for Crohn's**
or visit **SkyriziCrohns.com**

SKYRIZI Use¹

SKYRIZI is a prescription medicine used to treat moderate to severe Crohn's disease in adults.

SAFETY CONSIDERATIONS¹

SKYRIZI may cause serious side effects, including:

- **Serious allergic reactions:** Stop using SKYRIZI and get emergency medical help right away if you get any symptoms of a serious allergic reaction.
- **Infections:** SKYRIZI may increase your risk of infections. Before starting treatment, your doctor should check you for infections and tuberculosis. Tell your doctor right away if you have an infection or symptoms of one.
- **Do not use SKYRIZI if you are** allergic to risankizumab-rzaa or any of the ingredients in SKYRIZI.
- Also, tell your doctor if you plan to or recently received a vaccine.
- **Liver problems in Crohn's disease:** A person with Crohn's disease who received SKYRIZI by intravenous infusion developed changes in liver blood tests with a rash that led to hospitalization. Your doctor will do liver blood tests before and during treatment and may stop treatment with SKYRIZI if you develop liver problems.

Please see additional Important Safety Information on page 12.

Please see full Prescribing Information, including Medication Guide, at
https://www.rxabbvie.com/pdf/skyrizi_pi.pdf and discuss with your doctor.

abbvie

© 2022 AbbVie. All rights reserved. SKYRIZI® and its design are registered trademarks of AbbVie Biotechnology Ltd. US-SKZG-220205 June 2022



Skyrizi®
risankizumab-rzaa