

[WHAT TO CONSIDER](#)[SYMPTOM RELIEF](#)[REPAIR & REMISSION](#)[HOW IT WORKS](#)[DOSING](#)[SUPPORT & RESOURCES](#)[IMPORTANT SAFETY INFO](#)

▲ CLICK THE TABS ABOVE TO LEARN MORE ▲


Skyrizi[®]
risankizumab-rzaa

FOR ADULTS WITH MODERATE
TO SEVERE ULCERATIVE COLITIS (UC)



**TAKE
CONTROL OF UC
WITH SKYRIZI**

SAFETY CONSIDERATIONS

Do not use if you are allergic to SKYRIZI. SKYRIZI may cause serious side effects, including serious allergic reactions, an increased risk of infections, and liver problems.

- Stop using SKYRIZI and get emergency medical help right away if experiencing symptoms of a serious allergic reaction.
- Before starting treatment, your doctor should check for infections and tuberculosis. Tell your doctor right away about any infections or symptoms of infection and about planned or recent vaccines.
- Liver problems may happen while being treated for Crohn's disease or ulcerative colitis that can lead to hospitalization. Your doctor will do liver blood tests before and during treatment and may stop SKYRIZI if liver problems develop.

Please see additional Important Safety Information on page 10.

Please see Full Prescribing Information, including Medication Guide, at bit.ly/SkyriziPI and discuss with your doctor.



CONSIDERING A NEW TREATMENT OPTION?

Starting SKYRIZI or any ulcerative colitis (UC) treatment is a big decision, and there are many things to consider when weighing options with your doctor.

THINGS TO THINK ABOUT:

SYMPTOM RELIEF

You'll want to aim for relief from a wide range of disruptive symptoms, including frequent bowel movements, bloody stools, fatigue, and bowel urgency.

VISIBLE COLON LINING REPAIR

Also called "endoscopic improvement," visible colon lining repair is a reduction in inflammation your doctor can see during an endoscopy or colonoscopy—and it's an important goal of managing UC.

REMISSION

An important treatment goal is to achieve remission, which means you're experiencing few or no symptoms and your doctor can see visible repair in your colon lining.

DOSING

Different UC treatments involve different methods of administration. You and your doctor should talk about how a treatment is administered to see if it's a fit for you.

In this brochure, you'll learn more about SKYRIZI as a UC treatment option and if it could be the right fit for you.

SAFETY CONSIDERATIONS

Do not use if you are allergic to SKYRIZI. SKYRIZI may cause serious side effects, including serious allergic reactions, an increased risk of infections, and liver problems.

- Stop using SKYRIZI and get emergency medical help right away if experiencing symptoms of a serious allergic reaction.
- Before starting treatment, your doctor should check for infections and tuberculosis. Tell your doctor right away about any infections or symptoms of infection and about planned or recent vaccines.
- Liver problems may happen while being treated for Crohn's disease or ulcerative colitis that can lead to hospitalization. Your doctor will do liver blood tests before and during treatment and may stop SKYRIZI if liver problems develop.

Please see additional Important Safety Information on page 10. Please see Full Prescribing Information, including Medication Guide, at bit.ly/SkyriziPI and discuss with your doctor.


Skyrizi[®]
risankizumab-rzaa



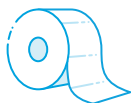
RELIEF

SKYRIZI DELIVERS SIGNIFICANT SYMPTOM RELIEF

SKYRIZI delivers early and significant relief from many ulcerative colitis (UC) symptoms.

**IN ONLY 4 WEEKS,
53% OF PEOPLE HAD:**

Fewer Bowel Movements



Fewer Bloody Stools



AND AT 12 WEEKS:



**No Bowel Movements
During Sleep**

67% had **no accidents or
bathroom trips during sleep.**



No Bowel Urgency

Many had **no bowel urgency.**



Less Fatigue

People experienced
significantly less UC fatigue.

SAFETY CONSIDERATIONS

Do not use if you are allergic to SKYRIZI. SKYRIZI may cause serious side effects, including serious allergic reactions, an increased risk of infections, and liver problems.

- Stop using SKYRIZI and get emergency medical help right away if experiencing symptoms of a serious allergic reaction.
- Before starting treatment, your doctor should check for infections and tuberculosis. Tell your doctor right away about any infections or symptoms of infection and about planned or recent vaccines.
- Liver problems may happen while being treated for Crohn's disease or ulcerative colitis that can lead to hospitalization. Your doctor will do liver blood tests before and during treatment and may stop SKYRIZI if liver problems develop.

Please see additional Important Safety Information on page 10. Please see Full Prescribing Information, including Medication Guide, at bit.ly/SkyriziPI and discuss with your doctor.


Skyrizi[®]
risankizumab-rzaa



REPAIR

EXPERIENCE VISIBLE
COLON LINING REPAIR*

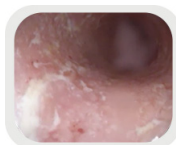
In an induction trial,[†] SKYRIZI helped **many people achieve visible colon lining repair*** at 12 weeks taking 1200 mg starter IV[‡] infusion.



In a maintenance trial,[§] among people who were eligible and entered, SKYRIZI helped the **majority achieve visible colon lining repair*** at 1 year taking 180 mg SC^{||} maintenance injection.

48% Many achieved visible colon lining repair* at 1 year taking 360 mg SC.^{||}

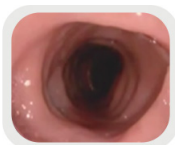
Your doctor will decide what maintenance dose is right for you.

SEE WHAT SKYRIZI VISIBLE
COLON LINING REPAIR* CAN LOOK LIKE:

Before SKYRIZI



Week 12



1 Year

Real clinical trial endoscopy images from a patient who received SKYRIZI 1200 mg during induction and 180 mg during maintenance. Patient achieved visible colon lining repair at 12 weeks and 1 year.

Individual results may vary.

REMISSION

ACHIEVE
REMISSION

SKYRIZI is proven to deliver remission as early as **12 weeks** and even at **1 year**.

12
WEEKS

In an induction trial,[†] SKYRIZI helped some people **achieve remission at 12 weeks**.

1
YEAR

In a maintenance trial,[§] among those who were eligible and entered, SKYRIZI helped many people **achieve lasting remission at 1 year**.

*Areas that were visually assessed may not represent repair of the entire colon lining.

[†]Results are from a clinical trial of 646 people who took SKYRIZI.

[‡]Intravenous infusion (through a vein in the arm).

[§]365 people who achieved a clinical response after 12 weeks of SKYRIZI induction and entered the maintenance trial. Clinical response is based on frequency of bowel movements, fewer bloody stools, and endoscopy results.

^{||}Subcutaneous injection (under the skin).

SAFETY CONSIDERATIONS

Do not use if you are allergic to SKYRIZI. SKYRIZI may cause serious side effects, including serious allergic reactions, an increased risk of infections, and liver problems.

- Stop using SKYRIZI and get emergency medical help right away if experiencing symptoms of a serious allergic reaction.
- Before starting treatment, your doctor should check for infections and tuberculosis. Tell your doctor right away about any infections or symptoms of infection and about planned or recent vaccines.
- Liver problems may happen while being treated for Crohn's disease or ulcerative colitis that can lead to hospitalization. Your doctor will do liver blood tests before and during treatment and may stop SKYRIZI if liver problems develop.

Please see additional Important Safety Information on page 10. Please see Full Prescribing Information, including Medication Guide, at bit.ly/SkyriziPI and discuss with your doctor.


Skyrizi[®]
risankizumab-rzaa



SKYRIZI WORKS TO REDUCE CHRONIC INFLAMMATION

SKYRIZI is the **first FDA-approved treatment for both ulcerative colitis (UC) and Crohn's disease that specifically targets the interleukin-23 (IL-23) protein**, one of the key proteins responsible for inflammation. By targeting IL-23, SKYRIZI can help reduce the chronic inflammation that can contribute to UC symptoms.



SKYRIZI is approved for adults with moderate to severe ulcerative colitis or moderate to severe Crohn's disease.



Watch a video about how SKYRIZI works at il23forUC.com

SAFETY CONSIDERATIONS

Do not use if you are allergic to SKYRIZI. SKYRIZI may cause serious side effects, including serious allergic reactions, an increased risk of infections, and liver problems.

- Stop using SKYRIZI and get emergency medical help right away if experiencing symptoms of a serious allergic reaction.
- Before starting treatment, your doctor should check for infections and tuberculosis. Tell your doctor right away about any infections or symptoms of infection and about planned or recent vaccines.
- Liver problems may happen while being treated for Crohn's disease or ulcerative colitis that can lead to hospitalization. Your doctor will do liver blood tests before and during treatment and may stop SKYRIZI if liver problems develop.

Please see additional Important Safety Information on page 10. Please see Full Prescribing Information, including Medication Guide, at bit.ly/SkyriziPI and discuss with your doctor.


Skyrizi[®]
risankizumab-rzaa



A TREATMENT THAT CAN FIT INTO YOUR ROUTINE

SKYRIZI is only **6 doses a year at home**, after 3 starter doses.



START at a Healthcare Facility



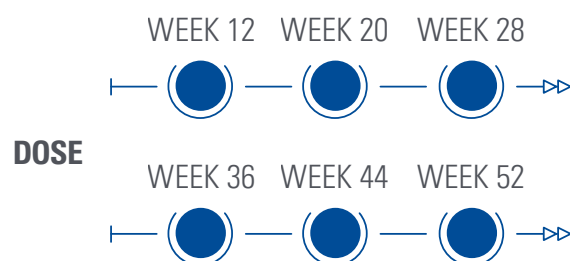
Start SKYRIZI with 3 infusions through a vein in your arm (intravenous infusion), administered by a healthcare provider.

Each dose consists of a 1200 mg intravenous infusion.

See the SKYRIZI “Instructions for Use” at [OBlforUC.com](https://www.oblforuc.com) for the full set of detailed instructions on the preparation and administration of SKYRIZI.



MAINTAIN at Home Every 8 Weeks



Continue SKYRIZI at home, after receiving training from a healthcare provider, with an under-the-skin (subcutaneous) injection using the prefilled cartridge with the SKYRIZI On-Body Injector (OBI).

Each dose consists of 180 mg/1.2 mL or 360 mg/2.4 mL subcutaneous injection via OBI. Your doctor will decide what maintenance dose is right for you.

SAFETY CONSIDERATIONS

Do not use if you are allergic to SKYRIZI. SKYRIZI may cause serious side effects, including serious allergic reactions, an increased risk of infections, and liver problems.

- Stop using SKYRIZI and get emergency medical help right away if experiencing symptoms of a serious allergic reaction.
- Before starting treatment, your doctor should check for infections and tuberculosis. Tell your doctor right away about any infections or symptoms of infection and about planned or recent vaccines.
- Liver problems may happen while being treated for Crohn’s disease or ulcerative colitis that can lead to hospitalization. Your doctor will do liver blood tests before and during treatment and may stop SKYRIZI if liver problems develop.

Please see additional Important Safety Information on page 10. Please see Full Prescribing Information, including Medication Guide, at bit.ly/SkyriziPI and discuss with your doctor.


Skyrizi[®]
risankizumab-rzaa



SKYRIZI OBI: DESIGNED WITH YOU IN MIND

With the SKYRIZI On-Body Injector (OBI), you're able to take control of your own treatment experience. Your healthcare provider will show you exactly how to use the OBI, but here are some introductory details:



DOSE DELIVERED IN 5 MINUTES

Once the injection preparation and application are complete.



HIDDEN NEEDLE

Discreet injection so you don't see the needle.



PREFILLED CARTRIDGE

No measuring medication.



COMPACT SIZE

Small enough to fit in the palm of the hand.



Watch a video to see how the On-Body Injector works at **OBIforUC.com**

In a patient survey,
93% of people said the OBI was
"Easy to Use" after the first use



In a survey of the SKYRIZI OBI in patients with moderate to severe Crohn's disease, patient-reported experience was collected using a Self-Injection Assessment Questionnaire (SIAQ). Patients were given the questionnaire after injection training by a healthcare provider (HCP) and following their first self-injection. 41 out of 44 patients reported the OBI was either "easy" or "very easy" to use.

HOW TO USE SKYRIZI: See the detailed "Instructions for Use" that comes with SKYRIZI for information on how to prepare and inject a dose of SKYRIZI, and how to properly throw away (dispose of) a used SKYRIZI prefilled cartridge with the OBI. Before self-injecting with SKYRIZI prefilled cartridge with OBI, your healthcare provider should show you how to inject SKYRIZI.

SAFETY CONSIDERATIONS

Do not use if you are allergic to SKYRIZI. SKYRIZI may cause serious side effects, including serious allergic reactions, an increased risk of infections, and liver problems.

- Stop using SKYRIZI and get emergency medical help right away if experiencing symptoms of a serious allergic reaction.
- Before starting treatment, your doctor should check for infections and tuberculosis. Tell your doctor right away about any infections or symptoms of infection and about planned or recent vaccines.
- Liver problems may happen while being treated for Crohn's disease or ulcerative colitis that can lead to hospitalization. Your doctor will do liver blood tests before and during treatment and may stop SKYRIZI if liver problems develop.

Please see additional Important Safety Information on page 10. Please see Full Prescribing Information, including Medication Guide, at bit.ly/SkyriziPI and discuss with your doctor.


Skyrizi[®]
risankizumab-rzaa



PARTNERING WITH YOUR GASTROENTEROLOGIST

Open and honest communication is a key part of working with your gastroenterologist and care team.

Though it can be uncomfortable, it's important to share details about any unpleasant symptoms—it allows your gastroenterologist to understand how ulcerative colitis (UC) is impacting you, and how best they can help you.



WHAT TO SHARE:

- Any symptoms you've had recently—be prepared to share any changes, big or small
- The day-to-day impact of your symptoms
- If you're skipping social events or avoiding certain foods
- How often you run to the bathroom

Get helpful tips with the UC Impact Assessment: [AssessUCImpact.com](https://www.assessucimpact.com)



KEY QUESTIONS TO ASK:

How is SKYRIZI different from other treatment options I've tried?

What kind of results could I experience with SKYRIZI?

What are the benefits and risks of SKYRIZI?

What are the potential side effects of SKYRIZI?

Use page 11 for any notes you may have.

SAFETY CONSIDERATIONS

Do not use if you are allergic to SKYRIZI. SKYRIZI may cause serious side effects, including serious allergic reactions, an increased risk of infections, and liver problems.

- Stop using SKYRIZI and get emergency medical help right away if experiencing symptoms of a serious allergic reaction.
- Before starting treatment, your doctor should check for infections and tuberculosis. Tell your doctor right away about any infections or symptoms of infection and about planned or recent vaccines.
- Liver problems may happen while being treated for Crohn's disease or ulcerative colitis that can lead to hospitalization. Your doctor will do liver blood tests before and during treatment and may stop SKYRIZI if liver problems develop.

Please see additional Important Safety Information on page 10. Please see Full Prescribing Information, including Medication Guide, at bit.ly/SkyriziPI and discuss with your doctor.


Skyrizi[®]
risankizumab-rzaa



Skyrizi[®] COMPLETE

Providing support at every step of your
ulcerative colitis (UC) treatment journey

Get personalized support and the resources you need to help you start and stay on track with your prescribed treatment plan—at no additional cost to you.

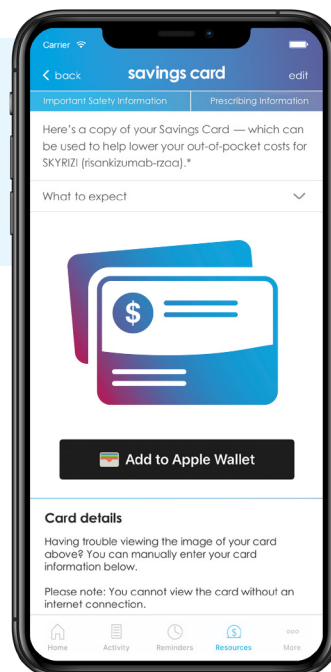
Pay as little as \$0* for SKYRIZI

There are three potential ways to save with Skyrizi Complete:

- 1 Starter dose-related costs for wherever your infusion happens
- 2 SKYRIZI starter doses and On-Body Injector
- 3 Required lab testing

*For eligible, commercially insured patients only. See [page 11](#) for Terms and Conditions.

To learn more about potential savings and sign up for Skyrizi Complete, visit [SkyriziUCCopay.com](https://www.SkyriziUCCopay.com)



Your Dedicated Nurse Ambassador[†]

Trying to find ways to save on your medicine? Have a question about your condition or questions about preparing for treatment? Your Skyrizi Complete Nurse Ambassador can help—with answers and 1-to-1 support for what you need to stay on track with your prescribed treatment plan.

[†]Nurse Ambassadors are provided by AbbVie and do not work under the direction of your health care professional (HCP) or give medical advice. They are trained to direct patients to their HCP for treatment-related advice, including further referrals.

SAFETY CONSIDERATIONS

Do not use if you are allergic to SKYRIZI. SKYRIZI may cause serious side effects, including serious allergic reactions, an increased risk of infections, and liver problems.

- Stop using SKYRIZI and get emergency medical help right away if experiencing symptoms of a serious allergic reaction.
- Before starting treatment, your doctor should check for infections and tuberculosis. Tell your doctor right away about any infections or symptoms of infection and about planned or recent vaccines.
- Liver problems may happen while being treated for Crohn's disease or ulcerative colitis that can lead to hospitalization. Your doctor will do liver blood tests before and during treatment and may stop SKYRIZI if liver problems develop.

Please see additional Important Safety Information on page 10. Please see Full Prescribing Information, including Medication Guide, at bit.ly/SkyriziPI and discuss with your doctor.


Skyrizi[®]
risankizumab-rzaa



USE

SKYRIZI is a prescription medicine used to treat moderate to severe ulcerative colitis in adults.

IMPORTANT SAFETY INFORMATION

What is the most important information I should know about SKYRIZI® (risankizumab-rzaa)?

SKYRIZI is a prescription medicine that may cause serious side effects, including:

Serious allergic reactions:

- Stop using SKYRIZI and get emergency medical help right away if you get any of the following symptoms of a serious allergic reaction:
 - fainting, dizziness, feeling lightheaded (low blood pressure)
 - swelling of your face, eyelids, lips, mouth, tongue, or throat
 - trouble breathing or throat tightness
 - chest tightness
 - skin rash, hives
 - itching

Infections:

SKYRIZI may lower the ability of your immune system to fight infections and may increase your risk of infections. Your healthcare provider should check you for infections and tuberculosis (TB) before starting treatment with SKYRIZI and may treat you for TB before you begin treatment with SKYRIZI if you have a history of TB or have active TB. Your healthcare provider should watch you closely for signs and symptoms of TB during and after treatment with SKYRIZI.

- Tell your healthcare provider right away if you have an infection or have symptoms of an infection, including:
 - fever, sweats, or chills
 - cough
 - shortness of breath
 - blood in your mucus (phlegm)
 - muscle aches
 - warm, red, or painful skin or sores on your body different from your psoriasis
 - weight loss
 - diarrhea or stomach pain
 - burning when you urinate or urinating more often than normal

Do not use SKYRIZI if you are allergic to risankizumab-rzaa or any of the ingredients in SKYRIZI. See the Medication Guide or Consumer Brief Summary for a complete list of ingredients.

Before using SKYRIZI, tell your healthcare provider about all of your medical conditions, including if you:

- have any of the conditions or symptoms listed in the section “What is the most important information I should know about SKYRIZI?”
- have an infection that does not go away or that keeps coming back.
- have TB or have been in close contact with someone with TB.
- have recently received or are scheduled to receive an

immunization (vaccine). Medicines that interact with the immune system may increase your risk of getting an infection after receiving live vaccines. You should avoid receiving live vaccines right before, during, or right after treatment with SKYRIZI. Tell your healthcare provider that you are taking SKYRIZI before receiving a vaccine.

- are pregnant or plan to become pregnant. It is not known if SKYRIZI can harm your unborn baby.
- are breastfeeding or plan to breastfeed. It is not known if SKYRIZI passes into your breast milk.
- become pregnant while taking SKYRIZI. You are encouraged to enroll in the Pregnancy Registry, which is used to collect information about the health of you and your baby. Talk to your healthcare provider or call 1-877-302-2161 to enroll in this registry.

Tell your healthcare provider about all the medicines you take, including prescription and over-the-counter medicines, vitamins, and herbal supplements.

What are the possible side effects of SKYRIZI?

SKYRIZI may cause serious side effects. See “What is the most important information I should know about SKYRIZI?”

Liver problems may happen while being treated for

Crohn’s disease or ulcerative colitis: A person with Crohn’s disease who received SKYRIZI through a vein in the arm developed changes in liver blood tests with a rash that led to hospitalization. Your healthcare provider will do blood tests to check your liver before, during, and at least up to 12 weeks of treatment, and may stop treatment with SKYRIZI if you develop liver problems. Tell your healthcare provider right away if you notice any of the following symptoms: unexplained rash, nausea, vomiting, stomach (abdominal) pain, tiredness (fatigue), loss of appetite, yellowing of the skin and eyes (jaundice), and dark urine.

The most common side effects of SKYRIZI in people treated for Crohn’s disease and ulcerative colitis

include: upper respiratory infections, headache, joint pain, stomach (abdominal) pain, injection site reactions, low red blood cells (anemia), fever, back pain, urinary tract infection, and rash.

These are not all the possible side effects of SKYRIZI. Call your doctor for medical advice about side effects.

Use SKYRIZI exactly as your healthcare provider tells you to use it.

SKYRIZI (risankizumab-rzaa) is available in a 600 mg/10 mL vial for intravenous infusion and a 180 mg/1.2 mL or 360 mg/2.4 mL single-dose prefilled cartridge with on-body injector.

You are encouraged to report negative side effects of prescription drugs to the FDA.

Visit www.fda.gov/medwatch or call 1-800-FDA-1088.


Skyrizi®
risankizumab-rzaa

Please see Full Prescribing Information, including Medication Guide, at bit.ly/SkyriziPI and discuss with your doctor.

